



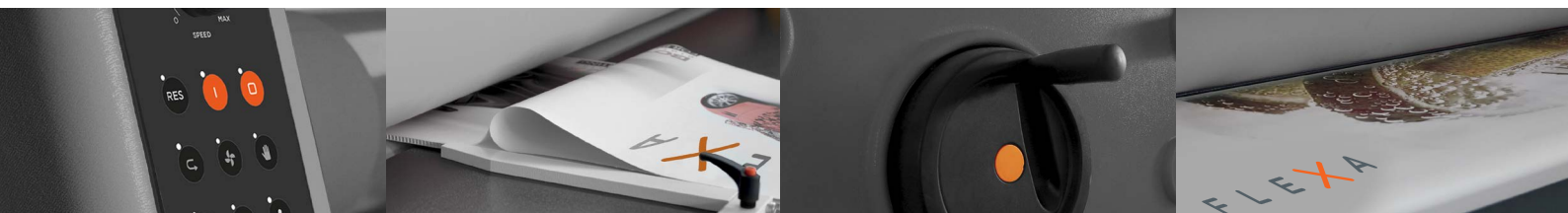
## EASY HEAT-ASSISTED TOP ROLLER LAMINATOR

High-performing heat-assisted top roller laminator for self-adhesive materials. It allows laminating, mounting and encapsulating. Designed to be durable and robust for excellent and high quality finishing results.

- > Professional sturdy laminator designed to improve your productivity every day with great precision and speed
- > Solid frame construction mounted on castors for long term reliability and safety
- > New lighter 3" aluminum shafts, for easy loading and unloading of the rolls
- > Extremely fast: it works up to 10 m/min (33 ft/min)
- > Always excellent results without air bubbles and defects
- > It mounts images on panels even of big dimensions, apply double-sided adhesive films, application tape and protective films
- > Easy and quick load and unload of the rolls thanks to the automatic locking system
- > Intuitive set up parameters thanks to the user-friendly control panel

### SUITABLE FOR:

- ☒ Rigid and flexible indoor displays
- ☒ Floor graphics
- ☒ Backlit displays
- ☒ Pop-up & trade shows graphics
- ☒ Roll-up banners
- ☒ Board mounts
- ☒ Outdoor signs
- ☒ Car wrapping
- ☒ Many more...





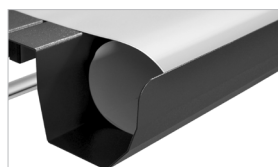
Removable steel worktop for easy loading of materials  
Feed-in guide (optional)



Electronically adjustable speed regulator



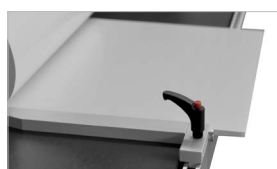
Rollers pressure gauge



Front tray for prints (optional)



Cutting bar with two knives (optional)



Reference square with guide (optional)



Manual lifting of the upper roller with the hand-wheel (motorized lifting optional)

Anti-crushing safety photosensitive device and emergency stop button

Rear rewinding shaft with clutch and shedding bar (optional)

Front unwinding shaft for adjusting the film tension with brake and counter bar (optional)

Feeding command by control panel or foot switch (hands free operation)

	EASY 160	EASY 210
Working width	1600 mm (65 in.)	2100 mm (83 in.)
Max. space between rollers	40 mm (1,6 in.)	40 mm (1,6 in.)
Coated rubber rollers	Ø 130 mm (5,2 in.)	Ø 130 mm (5,2 in.)
Heated upper roller preset	30°, 40°, 50° C (86°, 104°, 122° F)	30°, 40°, 50° C (86°, 104°, 122° F) Optional
Max. speed	10 m/min. (33 ft./min.)	10 m/min. (33 ft./min.)
Working height	890 mm (36 in.)	890 mm (36 in.)
Power supply	230 V - 50/60 Hz - 4000 W	230 V - 50/60 Hz - 400 W
Dimensions (W x D x H)	2050 x 800 x 1300 mm (81 x 32 x 51 in.)	2500 x 800 x 1300 mm (99 x 32 x 51 in.)
Weight	240 kg (530 lb.)	290 kg (640 lb.)
Packing dimensions (W x D x H)	2150 X 950 X 1600 mm (85 x 37 x 63 in.)	2650 x 1150 x 1600 mm (104 x 45x63 in.)
Packing weight	340 kg (750 lb.)	480 kg (1058 lb.)

#### Distributor

Manufactured in compliance with CE regulations



Follow us:



100 % Made by FLEXA



100 % Made in Italy