



# Technical Components Catalogue



**carmo**

*Your partner in plastic components*

# Carmo

## - your partner in plastic components

**Modern technology and design based on more than sixty years of professional experience, enable us to provide high quality, top performing, costefficient plastic component solutions.**

### **Carmo is a market leader**

Carmo is a leading developer, manufacturer and supplier of plastic components. We have more than sixty years of experience in designing and engineering advanced solutions. We produce our own wide range of high-quality plastic components, which we market at competitive prices and delivery times, to business partners and customers all over the world. We have a comprehensive knowledge of material composition, characteristics and performance, and we have developed our own protected range of formulas for raw material compounds.

### **Carmo locations**

Carmo has its head office in Denmark. We have a sales office in France and a Carmo distributor in Germany and the US.

### **Carmo main areas of business**

Industrial components

- Weldable eyelets and fittings
- Valves for inflating, overpressure and vacuum
- Threaded nozzels and caps
- HF/RF welding machines

Medical components

- Drainage valves
- Connectors and fittings for medical bags
- Customisation and OEM production

Product design and realisation

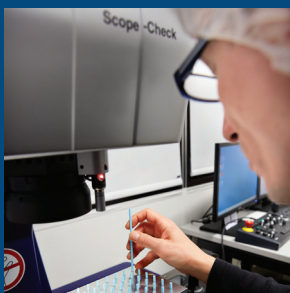
- Product development services and manufacturing engineering
- Pilot production, test and documentation
- Ramp-up and volume production

### **Contact us**

T: +45 4912 2100

E: [denmark@carmo.dk](mailto:denmark@carmo.dk)

[www.carmo.dk](http://www.carmo.dk)





## Contents

Buttons and Buttonholes	7
Snap Fasteners	7
Security Fasteners	9
Caps	10
Threaded Nozzles	11
Sets	13
Complementaries	14
Modular Valve System	16
Accessories for Modular Valves	17
Valve Tubes	19
Misc. Valves	20
Valves for Inflatables	20
Clip Grommets	22
Metal Reinforced Eyelets	24
Eyelets, oval and square	24
Weldable eyelets, round, round shoulders	27
Weldable eyelets, round, square shoulders	28
Ready to use eyelet borders and corners	30
Cleats	31
Linesupport and Handles	32
Related Parts	33
Curtain Rings etc.	35
Nylon Rings	35
Suction Cups	36
Miscellaneous	36
Welding Machines	37
Welding Tools	38
Carmo Clip Tool	38
Carmo Seal	38

**KEOFITT**  
WORLD LEADERS IN STERILE SAMPLING™



*"With Carmo you get the feeling the whole organisation is interested and involved whenever you contact them about something"*  
- Keofitt A/S

THE MANUFACTURER  
**Akva**  
WATERBEDS



*"With Carmo we have an effective communication and exchange of experiences and know-how"*  
- Akva A/S

 **NOFI**



*"Carmo's components deliver the exact standard we are looking for"*  
- NOFI Tromsø A/S

**O.B.Wiik**





*"For 40 years Carmo has delivered quality and punctuality"*  
- Isabella A/S

 **seil  
maker  
Iversen**  
ETABLERT 1868

 **Markleen**  
Oil Spill Technology

**pedi**  
**ZÜRICH**

**Meisel & Gerken**  
Wellness made in Germany

 **Dr. Winkler**

 **NorLense**

**Gullasyn**®

 **SINOTec**

**Xx**®  
**MaXxPrint**



# Product Development Services

## **Design, development and manufacture of special solutions including multi-component mouldings**

We are your partner in developing, designing and manufacturing special solutions for industrial and medical companies. Our engineers and technicians assist you in preparing a complete specification of product requirements and ensure that your plastic component solutions are high quality and comply with your technical and performance requirements. We can manufacture in clean room down to class 10,000 and we are certified to ISO 13485:2016.

## **Carmo offers services and support in all phases of product development**

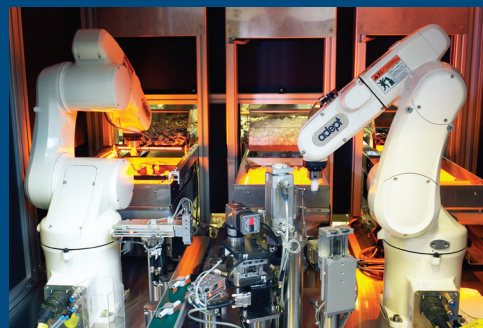
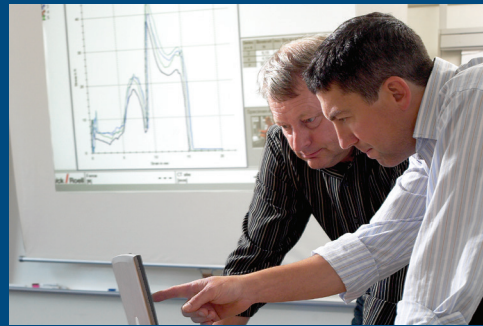
- Product design and mechanical construction/manufacturing engineering
- Process maturing, test, run-in and pilot production
- Qualification and validation of tools and processes
- Ramp-up and volume production

Our modern production equipment at the Carmo manufacturing facilities in Denmark provides us with comprehensive capacity and expertise for the benefit of our customers.

## **Carmo...**

- Specialises in advanced production with injection moulding machines;
- Offers multi-component moulding;
- Operates moulding machines ranging from 25 to 250 tonnes;
- Offers automated assembly solutions;
- Executes QA in accordance with AQL standards;
- Manufactures in clean room facilities - down to class 10,000;
- Offers manufacturing processes based on the customer's own moulds.
- Offers state-of-the-art optical and tactile measurements

Please contact us to hear more about our capabilities in customised plastic component solutions – and how we can assist you with our product development services





# Buttons

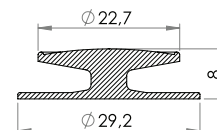
## Buttons and Buttonholes

01-055

### Button 22,7mm



HF/ultrasonic weldable button for use with raincoats, protective gear or other areas where an easy and inexpensive attachment is needed.



Variant	Material	Shore	Color	Stock	Pack	Prop.	Use	Comments
01-055-1402	PVC (PG47)	❖	□	✓	1 x 8.000		HF	
01-055-1403	PVC/PUR	❖	□	✓	1 x 8.000		HF	soft
01-055-1404	PVC/PUR	❖	□	✓	1 x 8.000		HF	soft
01-055-1405	PVC/PUR	❖	■	✓	1 x 8.000		HF	soft

Fits With:



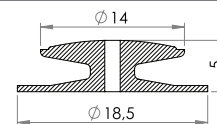
01-112

09-099

### Button 13.9 mm



HF/ultrasonic weldable button



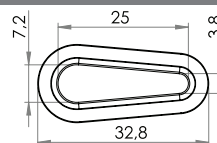
Variant	Material	Shore	Color	Stock	Pack	Prop.	Use	Comments
09-099-4102	PVC (PG47)	❖	□	✓	1 x 25.000		HF	

01-112

### Buttonhole Reinforcement



HF/ultrasonic weldable buttonhole reinforcement. For use with raincoats, protective gear or other areas where an easy and inexpensive attachment is needed.



Variant	Material	Shore	Color	Stock	Pack	Prop.	Use	Comments
01-112-1002	PVC (PG47)	❖	□	✓	4 x 8.000		HF	
01-112-1003	PVC/PUR	❖	□	✓	4 x 8.000		HF	
01-112-1004	PVC/PUR	❖	■	✓	4 x 8.000		HF	

Fits With:



01-055

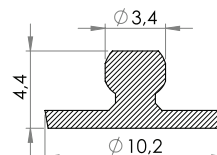
## Snap Fasteners

02-024

### Snap Fastener, male



HF/ultrasonic direct weldable Snap Fastener for click connections.



Variant	Material	Shore	Color	Stock	Pack	Prop.	Use	Comments
02-024-1061				✓	5.000/50.000			
02-024-1060	PVC (PZ21)	❖	□	✓	5.000/50.000		HF	

Fits With:



02-224



02-324

Properties:



Cold-resistant



UV-resistant



Oil-resistant



Re-inforced/armed

7

Use:



HF-weldable



Ultrasound-weldable



Glueable



Sterilizable

All geometrical dimensions and functional information are indicative. (Unless tolerances are specified). Carmo is not responsible for misprints and technical changes.

# Buttons

02-224

## Snap Fastener, female, low closing strength



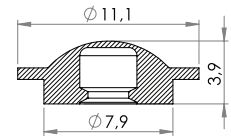
Plastic snap fastener (female part) with low closing strength.

Variant	Material	Shore	Color	Stock	Pack	Prop.	Use	Comments
02-224-2012	PVC (PZ58)			✓	4 x 25.000			

Fits With:



02-024



02-324

## Snap Fastener, female, medium closing strength



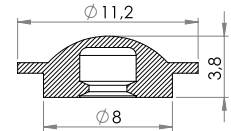
HF/ultrasonic direct weldable snap fastener

Variant	Material	Shore	Color	Stock	Pack	Prop.	Use	Comments
02-324-2003	PVC (PG47)	◆		✓	4 x 25.000			

Fits With:



02-024



02-031

## Snap Fastener, male



Nylon snap fastener, male part. Forms a re-usable click connection. Together with matching female parts 02-331 and 02-431

Variant	Material	Shore	Color	Stock	Pack	Prop.	Use	Comments
02-031-1065	PA			✓	6.000/24.000			

Fits With:



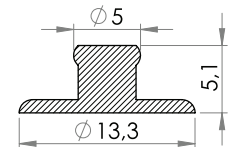
02-117



02-331



02-431



02-331

## Snap Fastener, female, medium closing strength



Female snap fastener for click connections. with medium closing strength

Variant	Material	Shore	Color	Stock	Pack	Prop.	Use	Comments
02-031-1065	PA			✓	6.000/24.000			
02-118-2001	PVC (PZ33)	◆		✓	6.000/24.000	✱	✱ ✱ ✱	

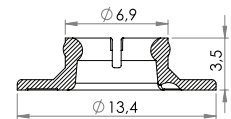
Fits With:



02-031



02-118



02-431

## Snap Fastener, female, heavy closing strength



Female snap fastener with heavy closing strength

Variant	Material	Shore	Color	Stock	Pack	Prop.	Use	Comments
02-431-2015	PA			✓	6.000/24.000			

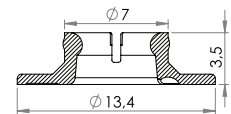
Fits With:



02-031



02-118


**Properties:**


8

**Use:**


All geometrical dimensions and functional information are indicative. (Unless tolerances are specified). Carmo is not responsible for misprints and technical changes.

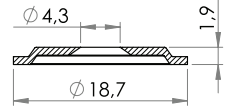
# Buttons

02-117

## Washer for 02-031



PVC washer for nylon (PA) snap fastener. Can be HF and ultrasonic welded to PVC sheets.



Variant	Material	Shore	Color	Stock	Pack	Prop.	Use	Comments
02-117-2002	PVC (PZ33)	45	White	✓	6.000/24.000	✱	HF, US	

Fits With:



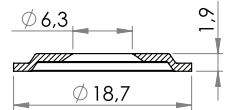
02-031

02-118

## Washer for 02-331, 02-431



Enables welding of nylon (PA) snap fastener 02-331, 02-431 to vinyl sheeting



Variant	Material	Shore	Color	Stock	Pack	Prop.	Use	Comments
02-118-2001	PVC (PZ33)	45	White	✓	6.000/24.000	✱	HF, US	

Fits With:



02-331



02-431

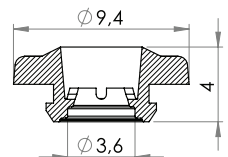
## Security Fasteners

09-132

## Security Fastener, female



Single use fastener for hospital ID bracelets etc. Female part



Variant	Material	Shore	Color	Stock	Pack	Prop.	Use	Comments
09-132-1420	POM		White	✓	4 x 25.000			

Fits With:



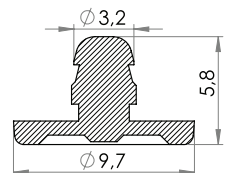
09-032

09-032

## Security Fastener, male



Single use fastener for hospital ID bracelets etc. Male part



Variant	Material	Shore	Color	Stock	Pack	Prop.	Use	Comments
09-032-1420	POM		White	✓	4 x 25.000			
09-032-1416	POM		Black	✓	4 x 25.000			

Fits With:



09-132

**Properties:**


Cold-resistant



UV-resistant



Oil-resistant


Re-inforced/  
armed

9

**Use:**


HF-weldable


Ultrasonic  
weldable


Gluable



Sterilizable

All geometrical dimensions and functional information are indicative. (Unless tolerances are specified). Carmo is not responsible for misprints and technical changes.

# Nozzles and Caps

## Caps

**03-561**

### Screwcap with wings, 25mm



25mm plastic screwcap with wings. A practical solution with recessed nozzles.

Variant	Material	Shore	Color	Stock	Pack	Prop.	Use	Comments
03-561-1105	PELD				2 x 500			
03-561-1103	PELD				2 x 500			

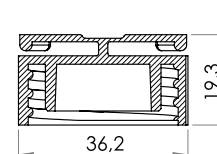
Fits With:



03-730







03-628


**03-935**

### Plastic Cap, 25mm for weldable nozzle



PEHD Cap with internal location ring

Variant	Material	Shore	Color	Stock	Pack	Prop.	Use	Comments
03-935-1001	PEHD				1 x 2.000			
03-935-1005	PEHD				1 x 2.000			

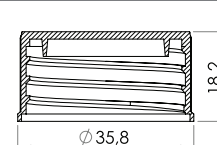
Fits With:



03-628











03-730


**03-936**

### Plastic Cap, 25mm for weldable nozzle, w/wo Gasket



Can be supplied with or without gasket 03-937. Suitable also for insert 03-625 when used with recessed nozzle 03-628

Variant	Material	Shore	Color	Stock	Pack	Prop.	Use	Comments
03-936-1006	PEHD				1 x 2.000			
03-936-1002	PEHD				1 x 2.000			
03-936-7004	PEHD+Foam				1 x 2.000			Incl. Gasket
03-936-7003	PEHD+Foam				1 x 2.000			Incl. Gasket

Fits With:



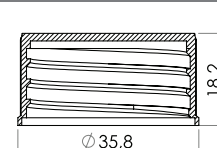
03-628



03-730








03-937


**03-974**

### Plastic Cap for 34mm nozzle



Plastic Cap for use with 34mm threaded nozzle. Can be supplied with gasket 03-938.

Variant	Material	Shore	Color	Stock	Pack	Prop.	Use	Comments
03-974-1012	PEHD				1 x 500			
03-974-1014	PEHD				1 x 500			
03-974-1004	PEHD				1 x 500			
03-974-1002	PEHD				1 x 500			

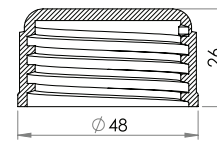
Fits With:



03-731



03-938



Properties:



Cold-resistant



UV-resistant



Oil-resistant


Re-inforced/  
armed

10

Use:



HF-weldable


Ultrasonic  
weldable


Glueable



Sterilizable

All geometrical dimensions and functional information are indicative. (Unless tolerances are specified). Carmo is not responsible for misprints and technical changes.



# Nozzles and Caps

03-945

## Plastic Cap with Gasket for 45mm nozzle



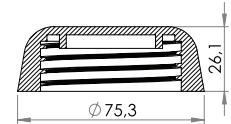
Cap with built-in gasket

Variant	Material	Shore	Color	Stock	Pack	Prop.	Use	Comments
03-945-1003	PEHD		Blue	✓	1 x 400			
03-945-1001	PEHD		Red	✓	1 x 400			
03-945-1005	PEHD		Black	✓	1 x 400			

Fits With:



03-745



03-976

## Valve Cap 1½"



Cap with G 1½" pipe thread

Variant	Material	Shore	Color	Stock	Pack	Prop.	Use	Comments
03-976-2000	PEHD		Yellow	✓	1 x 600			

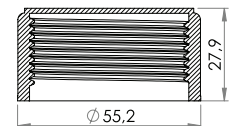
Fits With:



03-634



03-632



03-568

## Plastic Cap with Gasket, 98mm



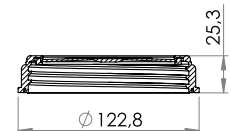
Food content approved. Soft white rubber gasket included. Also sold as a set (03-129) together with nozzle 03-734

Variant	Material	Shore	Color	Stock	Pack	Prop.	Use	Comments
03-568-7102	PEHD+Rubbe		Red	✓	1 x 200			

Fits With:



03-734



03-569

## Plastic Cap with Gasket, 146mm



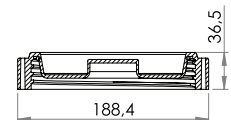
Large, heavy duty cap with 'O' ring. Can be tightened by hand or via external hex head feature. Also sold as a set (03-130) together with nozzle 03-735

Variant	Material	Shore	Color	Stock	Pack	Prop.	Use	Comments
03-569-7101	PEHD+Rubbe		Black	✓	1 x 70			

Fits With:



03-735



## Threaded Nozzles

03-730

## Threaded Nozzle, 25mm



25mm plastic nozzle with smooth bore. HF/ultrasonic weldable

Variant	Material	Shore	Color	Stock	Pack	Prop.	Use	Comments
03-730-1016	PELD		White	✓	1 x 1.000		≡	
03-730-1013	PVC (PG28)	⊠	White	✓	1 x 1.000		≡ ∅	
03-730-1010	PVC/PUR	⊠	White	✓	1 x 1.000		≡ ∅	

Fits With:



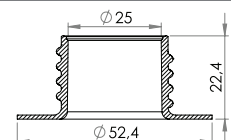
03-935



03-936



03-561



Properties:



11

Use:



All geometrical dimensions and functional information are indicative. (Unless tolerances are specified). Carmo is not responsible for misprints and technical changes.

# Nozzles and Caps

03-628

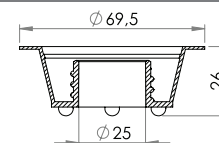
## Recessed Threaded Nozzle, 25mm



HF/ultrasonic weldable 25mm recessed nozzle. Completely sub flush.

Variant	Material	Shore	Color	Stock	Pack	Prop.	Use	Comments
03-628-1116	PVC (PF60)	❖	□	✓	1 x 500	↘	↘ △	
03-628-1104	PVC (PG57)	❖	□	✓	1 x 500	↘	↘ △	
03-628-1114	PVC/PUR	❖	□	✓	1 x 500	↘	↘ △	

Fits With:



03-731

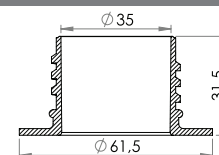
## Threaded Nozzle, 34mm



34mm plastic nozzle with smooth bore. HF/ultrasonic weldable

Variant	Material	Shore	Color	Stock	Pack	Prop.	Use	Comments
03-731-1021	PELD		□	✓	1 x 500		↘	
03-731-1013	PVC (PZ33)	❖	□	✓	1 x 500	✳	↘ △	
03-731-1018	PVC/PUR	❖	■	✓	1 x 500		↘ △	

Fits With:



03-745

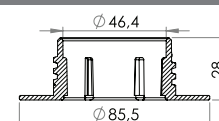
## Threaded Nozzle, 45mm



HF/ultrasonic weldable 45mm nozzle

Variant	Material	Shore	Color	Stock	Pack	Prop.	Use	Comments
03-745-1005	PVC (PY28)	❖	■	✓	1 x 400		↘ △	
03-745-1006	PVC/PUR	❖	■	✓	1 x 400		↘ △	

Fits With:



03-734

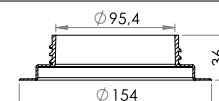
## Threaded Nozzle, 98mm



98mm plastic nozzle with smooth internal bore. HF/ultrasonic weldable. For use in large and small containers for fluids and powders / granules

Variant	Material	Shore	Color	Stock	Pack	Prop.	Use	Comments
03-734-1101	PELD		□	✓	1 x 165		↘	
03-734-1009	PVC (PY28)	❖	■	✓	1 x 165		↘ △	

Fits With:



03-735

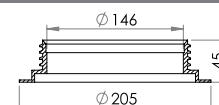
## Threaded Nozzle, 146mm



146mm plastic nozzle. HF/ultrasonic weldable. For fluids and powders granules in large and small containers.

Variant	Material	Shore	Color	Stock	Pack	Prop.	Use	Comments
03-735-1107	PELD		□	✓	1 x 60		↘	
03-735-1109	PELD		■	✓	1 x 60		↘	

Fits With:


**Properties:**


12

**Use:**


All geometrical dimensions and functional information are indicative. (Unless tolerances are specified). Carmo is not responsible for misprints and technical changes.

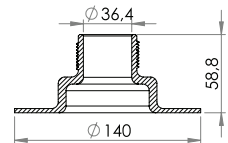
# Nozzles and Caps

03-634

## Threaded Nozzle 1½" (36,4 mm)



HF/ultrasonic weldable nozzle, G 1½" thread, FDA/BGA approved material. For use in large and small containers for fluids and powders / granules. Industry standard thread means it is compatible with a wide range of fittings.



Variant	Material	Shore	Color	Stock	Pack	Prop.	Use	Comments
03-634-1009	PVC (PG14)	❖	■	✓	1 x 90		⚡ ⚡ ⚡	

Fits With:



03-976



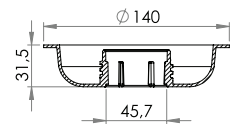
03-633

03-045

## 45mm Recessed Threaded Filler Flange



Weldable, recessed filler flange, Ø45 mm nominal bore, completely sub flush and easy access to cap, even with gloved hands.



Variant	Material	Shore	Color	Stock	Pack	Prop.	Use	Comments
03-045-1004	PVC (PY28)	❖	■	✓	1 x 96		⚡ ⚡ ⚡	

Fits With:



03-945

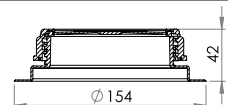
## Sets

03-129

## Nozzle and Cap Set, Ø98 mm bore



Weldable nozzle and screw cap with sealing ring, suitable for bulk containers. Paired set of 03-734 and cap 03-568. Suitable for containers from 60 to 1500 litres.



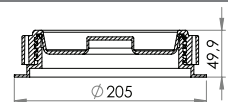
Variant	Material	Shore	Color	Stock	Pack	Prop.	Use	Comments
03-129-7303	PVC+PEHD		■	✓	1 x 80		⚡ ⚡ ⚡	
03-129-7404	PVC+PEHD		■	✓	1 x 80		⚡ ⚡ ⚡	
03-129-7403	PVC+PEHD		■	✓	1 x 80		⚡ ⚡ ⚡	

03-130

## Nozzle with Cap + Gasket, Ø 146mm bore



Paired set of 146mm weldable nozzle and plastic cap with 'O'-ring seal. Suitable for large and small containers.



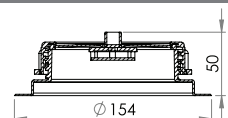
Variant	Material	Shore	Color	Stock	Pack	Prop.	Use	Comments
03-130-7733	PVC+PE+Rub		■	✓	1 x 48		⚡ ⚡ ⚡	

03-131

## Nozzle with ventilated Cap, Ø 98mm bore



Weldable plastic flange and screw cap with built-in valve. 98mm. Suitable for containers from 60 to 1500 litres.



Variant	Material	Shore	Color	Stock	Pack	Prop.	Use	Comments
				✓	1 x 80			

Properties:



Cold-resistant



UV-resistant



Oil-resistant



Reinforced/armed

13

Use:



HF-weldable



Ultrasonic weldable



Glueable



Sterilizable

All geometrical dimensions and functional information are indicative. (Unless tolerances are specified). Carmo is not responsible for misprints and technical changes.

# Nozzles and Caps

03-632

## Set of Threaded Filler Neck 1½" (36.4 mm) and support flange



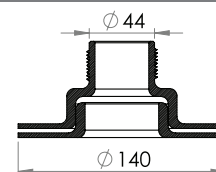
Paired set of G1,5 filler neck and support flange. Ideal to obtain an even stronger weld and improve robustness in situations where the container is under constant flex.

Variant	Material	Shore	Color	Stock	Pack	Prop.	Use	Comments
03-632-7007	PVC+PVC		■ ■	↗	1 x 90			

Fits With:



03-976



## Complementaries

03-625

## Insert for 25mm recessed Threaded Nozzle 03-628



Insert for weldable recessed 25mm nozzle, for stiffening and improved sealing. e.g. as an extra safety feature for use in water beds.

Variant	Material	Shore	Color	Stock	Pack	Prop.	Use	Comments
03-625-1005	PVC (PF60)	❖	□	✓	4 x 500	↘		

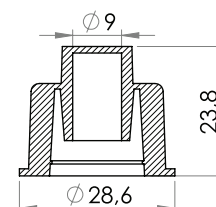
Fits With:



03-628



03-936



03-633

## Flange for 03-634



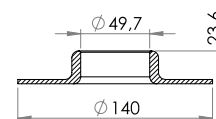
Support flange, can be used with threaded nozzle, FDA/BGA approved

Variant	Material	Shore	Color	Stock	Pack	Prop.	Use	Comments
03-633-1005	PVC (PG14)	❖	■	✓	1 x 135		↘ ↙ ⬇	

Fits With:



03-634



03-640

## Flange B



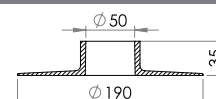
HF/ultrasonic weldable flange with 2" bore. Often used as grommets for 2" piping in water bags e.g. in rain water recycling systems.

Variant	Material	Shore	Color	Stock	Pack	Prop.	Use	Comments
03-640-1010	PVC (PG47)	❖	■	↗	1 x 140		↘ ↙ ⬇	

Fits With:



03-641



03-641

## Flange A



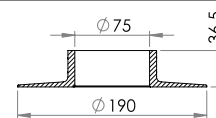
HF/ultrasonic weldable flange with 3" bore

Variant	Material	Shore	Color	Stock	Pack	Prop.	Use	Comments
03-641-1007	PVC (PG47)	❖	■	↗	1 x 110		↘ ↙ ⬇	

Fits With:



03-640


**Properties:**


Cold-resistant



UV-resistant



Oil-resistant



Re-inforced/armed

14

**Use:**


HF-weldable



Ultrasonic weldable



Glueable



Sterilizable

All geometrical dimensions and functional information are indicative. (Unless tolerances are specified). Carmo is not responsible for misprints and technical changes.

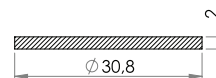
# Nozzles and Caps

03-937

## Gasket, 25mm for cap 03-936



Foam gasket for plastic cap 03-936.



Variant	Material	Shore	Color	Stock	Pack	Prop.	Use	Comments
03-937-1002	Foam		□	🔧	1 x 300	■		

Fits With:



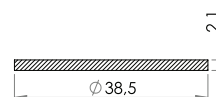
03-936

03-938

## Gasket, 34mm for cap 03-974



Foam gasket for plastic cap 03-974



Variant	Material	Shore	Color	Stock	Pack	Prop.	Use	Comments
03-938-2001	Foam		□	🔧	Call for quote			

Fits With:



03-974

Properties:



Cold-resistant



UV-resistant



Oil-resistant



Re-inforced/armed

15

Use:



HF-weldable



Ultrasonic weldable



Gluable



Sterilizable

All geometrical dimensions and functional information are indicative. (Unless tolerances are specified). Carmo is not responsible for misprints and technical changes.

# Valves

## Modular Valve System

03-284

### Vacuum Valve incl. 'O'-ring



ABS vacuum valve with G 3/4" thread. A low profile valve - stable and secure - easy to open - easy to close - rapid venting. Simple design – Highly versatile.

Variant	Material	Shore	Color	Stock	Pack	Prop.	Use	Comments
03-284-7003	ABS+Rubber		■	✓	1 x 250			

Fits With:



03-601



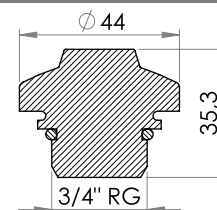
03-960



03-371



03-961



03-374

### Pressure Relief Valve incl 'O'-ring



ABS pressure relief valve with G 3/4" thread. A low profile relief valve opening when a predetermined pressure is reached. Nominal opening pressure 0,07 bar.

Variant	Material	Shore	Color	Stock	Pack	Prop.	Use	Comments
03-374-7077	ABS+Metal		■	✓	1 x 250	★		

Fits With:



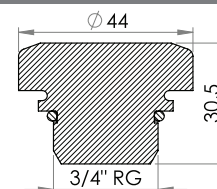
03-601



03-960



03-711



03-474

### Pressure / Inflation Valve Incl. 'O'-Ring



ABS pressure valve / inflation valve. Ideal for dunnage bags and similar inflatable products up to approximately 0,3 bar.

Variant	Material	Shore	Color	Stock	Pack	Prop.	Use	Comments
03-474-7010	ABS+Metal		■	✓	1 x 250	★		

Fits With:



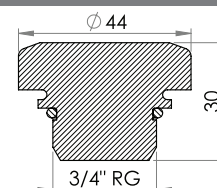
03-601



03-960



03-711



03-601

### Flange with internal thread G 3/4"



HF/ultrasonic weldable plastic flange with internal G 3/4" thread. Weldable onto PVC and PUR materials. Industry standard thread, compatible with a range of Carmo fittings and those of other manufacturers.

Variant	Material	Shore	Color	Stock	Pack	Prop.	Use	Comments
03-601-3112	PVC (PY28)	❖	■	✓	1 x 750		⚡ ⚡ ⚡	
03-601-2104	PVC/PUR	❖	■	✓	1 x 750		⚡ ⚡ ⚡	

Fits With:



03-199



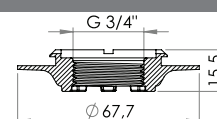
03-274



03-284



03-374


**Properties:**


Cold-resistant



UV-resistant



Oil-resistant



Re-inforced/armed

16

**Use:**


HF-weldable



Ultrasonic weldable



Glueable



Sterilizable

All geometrical dimensions and functional information are indicative. (Unless tolerances are specified). Carmo is not responsible for misprints and technical changes.



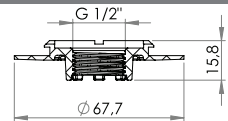
# Valves

03-606

## Flange with internal thread G 1/2"



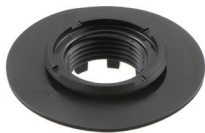
HF/ultrasonic weldable plastic flange with internal G 1/2" thread. Weldable onto PVC and PUR materials. Industry standard thread, compatible with a range of Carmo fittings and those of other manufacturers.



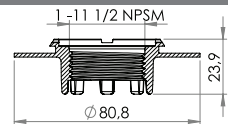
Variant	Material	Shore	Color	Stock	Pack	Prop.	Use	Comments
03-606-0001	PVC (PY28)	⊠	■	✓	1 x 800			
03-606-0002	PVC/PUR	⊠	■	✓	1 x 800			

03-609

## HF/ultrasonic weldable flange with internal American NPSM 1" thread



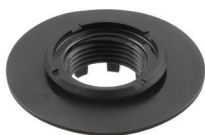
HF/ultrasonic weldable plastic flange with internal American NPSM 1" thread (the straight version of NPT 1"). Weldable onto PVC coated materials. Industry standard thread, compatible with a range of readily available fittings and connections.



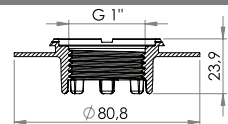
Variant	Material	Shore	Color	Stock	Pack	Prop.	Use	Comments
03-609-0001	PVC (PY28)	⊠	■	✓	1 x 500			

03-611

## HF/ultrasonic weldable flange with internal G1" thread (BSP 1")



HF/ultrasonic weldable plastic flange with internal G1" thread (BSP 1"). Industry standard thread, compatible with a range of readily available fittings and connections. Possibility of using a retainer ring to keep track of loose caps etc.



Variant	Material	Shore	Color	Stock	Pack	Prop.	Use	Comments
03-611-0001	PVC (PY28)	⊠	■	✓	1 x 500			
03-611-0002	PVC/PUR	⊠	■	✓	1 x 500			

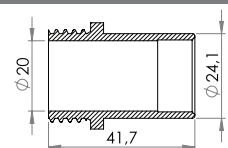
## Accessories for Modular Valves

03-199

## Threaded Piece



For attachment of tubing directly to the 03-601 flange. G 3/4" pipe thread, smooth body



Variant	Material	Shore	Color	Stock	Pack	Prop.	Use	Comments
03-199-1202	PVC (PY28)	⊠	■	✓	2 x 500			

Fits With:



03-601

03-961

03-475

## Threaded Plug incl. 'O'-Ring



ABS solid plug for weldable flange 03-601

Variant	Material	Shore	Color	Stock	Pack	Prop.	Use	Comments
03-475-7001	ABS+Rubber		■	✓	1 x 1.000			

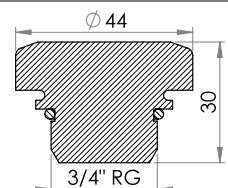
Fits With:



03-711

03-601

03-960



Properties:



17

Use:



All geometrical dimensions and functional information are indicative. (Unless tolerances are specified). Carmo is not responsible for misprints and technical changes.

# Valves

03-645

## Coin Groove Cap for 03-601



Threaded plug with coin groove. For threaded plastic flange

Variant	Material	Shore	Color	Stock	Pack	Prop.	Use	Comments
03-645-1253	POM		■	✓	4 x 500			

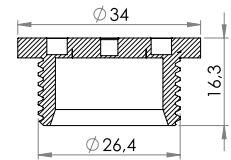
Fits With:



03-601



03-961



03-711

## Cap with attachment Ring,



Plastic protection cap for modular valves

Variant	Material	Shore	Color	Stock	Pack	Prop.	Use	Comments
03-711-2002	PVC (PG57)	❖	■	✓	1 x 1.000			

Fits With:



03-274



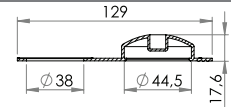
03-374



03-474



03-475



03-714

## Cap with attachment Ring, vented



PVC protection cap for Pressure Relief Valve (03-374)

Variant	Material	Shore	Color	Stock	Pack	Prop.	Use	Comments
03-714-1002	PVC (PG57)	❖	■	✓	1 x 1.000			

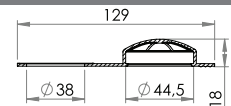
Fits With:



03-374



03-601



03-960

## Retainer Ring



Keeps the valve or plug attached to the weldable flange 03-601

Variant	Material	Shore	Color	Stock	Pack	Prop.	Use	Comments
03-960-1010	PVC (PC00)		□	✓	Call for quote			

Fits With:



03-274



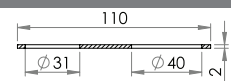
03-374



03-474



03-475



03-961

## Spare 'O'-Ring for 03-645, 03-199



Spare 'O'-ring for coin groove cap 03-645 or threaded piece 03-199

Variant	Material	Shore	Color	Stock	Pack	Prop.	Use	Comments
03-961-1002	Rubber		■	✓	100 / 500			

Fits With:



03-274



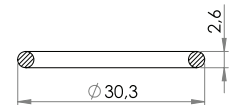
03-284



03-374



03-474


**Properties:**


18

**Use:**


All geometrical dimensions and functional information are indicative. (Unless tolerances are specified). Carmo is not responsible for misprints and technical changes.

# Valves

03-371

## Pump Adaptor for vacuum valve



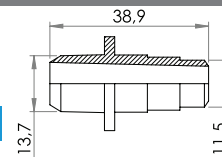
Adaptor for vacuum valve, allowing connection of a tube. Simple push-fit allows easy connection

Variant	Material	Shore	Color	Stock	Pack	Prop.	Use	Comments
03-371-0002	PA			✓	1 x 1.000			Fits with 03-284

Fits With:



03-284



## Valve Tubes

03-580

## Oral Tube 90 degrees, Ø 13mm



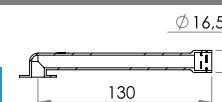
HF/ultrasonic weldable oral tube, used for inflation or tube connection

Variant	Material	Shore	Color	Stock	Pack	Prop.	Use	Comments
03-580-1004	PVC/PUR	❖	■	✓	1 x 700		⌘ ⌘ ⌘	
03-580-1007	PVC/PUR	❖	■	✓	1 x 700		⌘ ⌘ ⌘	

Fits With:



03-594



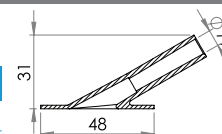
03-801

## Angled Tube, 30 Degrees, Ø 7mm



HF/ultrasonic weldable angled tube, use as inlet/outlet or tube connector

Variant	Material	Shore	Color	Stock	Pack	Prop.	Use	Comments
03-801-2078	PUR		■	✓	1 x 2.000			
03-801-2070	PVC (PG75)	❖	■	✓	1 x 2.000		⌘ ⌘ ⌘	
03-801-2076	PVC (PG75)	❖	■	✓	1 x 2.000		⌘ ⌘ ⌘	
03-801-2072	PVC/PUR	❖	■	✓	1 x 2.000		⌘ ⌘ ⌘	
03-801-2079	PVC/PUR	❖	■	✓	1 x 2.000		⌘ ⌘ ⌘	



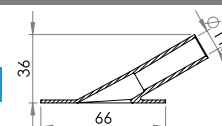
03-802

## Angled Tube, 30 degrees, Ø 11mm



HF/ultrasonic weldable angled tube, use as inlet/outlet or tube connector

Variant	Material	Shore	Color	Stock	Pack	Prop.	Use	Comments
03-802-2059	PVC/PUR	❖	■	✓	1 x 1.000		⌘ ⌘ ⌘	
03-802-2054	PVC/PUR	❖	■	✓	1 x 1.000		⌘ ⌘ ⌘	
03-802-2062	PVC/PUR	❖	■	✓	1 x 1.000		⌘ ⌘ ⌘	



03-803

## Angled Tube, Ø 14mm



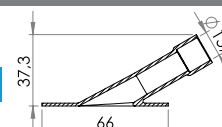
HF/ultrasonic weldable angled tube, use as inlet/outlet or tube connector

Variant	Material	Shore	Color	Stock	Pack	Prop.	Use	Comments
03-803-0001	PVC/PUR	❖	■	✓	1 x 1.000		⌘ ⌘ ⌘	

Fits With:



03-594



Properties:



19

Use:



All geometrical dimensions and functional information are indicative. (Unless tolerances are specified). Carmo is not responsible for misprints and technical changes.

# Valves

## Misc. Valves

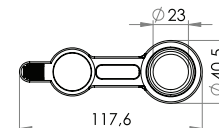
09-675

### Filler/Drain Port, 23 mm



23 mm filler and drain valve for use in medical and blood bags

Variant	Material	Shore	Color	Stock	Pack	Prop.	Use	Comments
09-675-1080	PVC (PZ47)	❖	□	✓	1 x 1.000		HF	
09-675-1077	PVC (PG47)	❖	■	✓	1 x 1.000		HF	
09-675-1036	PVC (PG47)	❖	■	✓	1 x 1.000		HF	
09-675-1032	PVC/PUR	❖	□	✓	1 x 1.000		HF	
09-675-1039	PVC/PUR	❖	■	✓	1 x 1.000		HF	



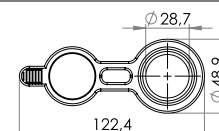
09-677

### Filler/Drain Port, 28 mm



28 mm filler and drain valve for use in medical and blood bags and feeding systems

Variant	Material	Shore	Color	Stock	Pack	Prop.	Use	Comments
09-677-1124	PVC (PG47)	❖	■	✓	1 x 700		HF	
09-677-1128	PVC/PUR	❖	■	✓	1 x 700		HF	
09-677-1130	PVC/PUR	❖	■	✓	1 x 700		HF	



## Valves for inflatables

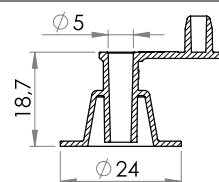
03-305

### Inflation Valve, free-flow, fixed plug, 5mm inlet



HF/ultrasonic weldable inflation valve, 5mm inlet with integrated plug. Free-flow for rapid inflation and deflation.

Variant	Material	Shore	Color	Stock	Pack	Prop.	Use	Comments
03-305-0001	PVC (PG99)	❖	□	✓	1 x 7.000		HF	
03-305-0005	PVC (PG99)	❖	■	✓	1 x 7.000		HF	
03-305-0003	PVC/PUR	❖	□	✓	1 x 7.000		HF	



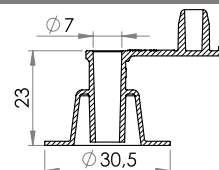
03-307

### Inflation Valve, free-flow, fixed plug, 7mm



Valve for inflatables with fixed plug and 7mm inlet. Optimised for HF/RF welding. Replaces 03-612.

Variant	Material	Shore	Color	Stock	Pack	Prop.	Use	Comments
03-307-0001	PVC (PG75)	❖	□	✓	1 x 4.000		HF	
03-307-0002	PVC (PZ90)	❖	□	✓	1 x 4.000		HF	Phthalate free , EN71-3
03-307-0003	PVC/PUR	❖	□	✓	1 x 4.000		HF	



Properties:



Cold-resistant



UV-resistant



Oil-resistant



Reinforced/armed

20

Use:



HF-weldable



Ultrasonic weldable



Gluable



Sterilizable

All geometrical dimensions and functional information are indicative. (Unless tolerances are specified). Carmo is not responsible for misprints and technical changes.

# Valves

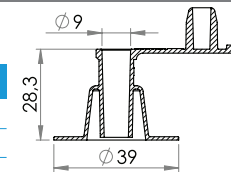
03-309

## Inflation Valve, free-flow, fixed plug, 9mm inlet



HF/ultrasonic weldable PVC inflation valve with fixed plug and 9mm inlet.

Variant	Material	Shore	Color	Stock	Pack	Prop.	Use	Comments
03-309-0001	PVC (PG75)	◆	□	✓	1 x 2.000		⋈ ⋈ ⋈	
03-309-0002	PVC (PG75)	◆	■	✓	1 x 2.000		⋈ ⋈ ⋈	
03-309-0004	PVC/PUR	◆	□	✓	1 x 2.000		⋈ ⋈ ⋈	



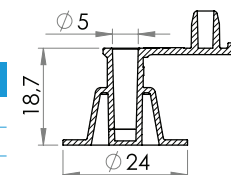
03-325

## Inflation Valve, non-return, fixed plug, 5mm inlet



HF/ultrasonic weldable plastic inflation valve with non-return feature.

Variant	Material	Shore	Color	Stock	Pack	Prop.	Use	Comments
03-325-0001	PVC (PG99)	◆	□	✓	1 x 7.000		⋈ ⋈ ⋈	
03-325-0003	PVC/PUR	◆	□	✓	1 x 7.000		⋈ ⋈ ⋈	
03-325-0004	PVC/PUR	◆	■	✓	1 x 7.000		⋈ ⋈ ⋈	



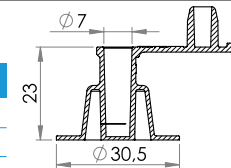
03-327

## Inflation Valve, non-return, fixed plug, 7mm inlet



HF/ultrasonic weldable valve for inflatables.

Variant	Material	Shore	Color	Stock	Pack	Prop.	Use	Comments
03-327-0001	PVC (PG75)	◆	□	✓	1 x 4.000		⋈ ⋈ ⋈	
03-327-0003	PVC/PUR	◆	□	✓	1 x 4.000		⋈ ⋈ ⋈	
03-327-0004	PVC/PUR	◆	■	✓	1 x 4.000		⋈ ⋈ ⋈	



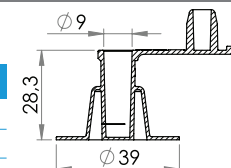
03-329

## Inflation Valve, non-return, fixed plug, 9mm inlet



HF/ultrasonic weldable inflation valve, with non-return feature, with fixed plug.

Variant	Material	Shore	Color	Stock	Pack	Prop.	Use	Comments
03-329-0001	PVC (PG90)	◆	□	✓	1 x 2.000		⋈ ⋈ ⋈	
03-329-0002	PVC/PUR	◆	□	✓	1 x 2.000		⋈ ⋈ ⋈	



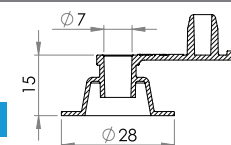
03-207

## Low-profile inflation Valve, free-flow, fixed plug, 7mm



Valve for inflatables with fixed plug and 7mm inlet. Optimised for HF/RF welding. Low profile for use in compact designs.

Variant	Material	Shore	Color	Stock	Pack	Prop.	Use	Comments
03-207-0001	PVC (PG75)	◆	□	✓	1 x 4.000			



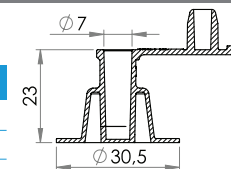
03-327

## Inflation Valve, non-return, fixed plug, 7mm inlet



HF/ultrasonic weldable valve for inflatables.

Variant	Material	Shore	Color	Stock	Pack	Prop.	Use	Comments
03-327-0001	PVC (PG75)	◆	□	✓	1 x 4.000		⋈ ⋈ ⋈	
03-327-0003	PVC/PUR	◆	□	✓	1 x 4.000		⋈ ⋈ ⋈	
03-327-0004	PVC/PUR	◆	■	✓	1 x 4.000		⋈ ⋈ ⋈	



# Grommets and eyelets

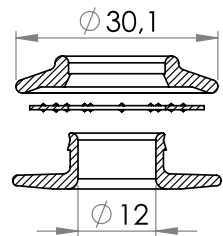
## Clip Grommets

04-512

### Clip Grommet Set, Ø 12mm



Plastic clip grommet for reinforcement of 12mm holes in textiles, awnings, tarpaulins, banners etc. Can be inserted manually. Punched hole Ø 14mm (smaller for flexible material)



Variant	Material	Shore	Color	Stock	Pack	Prop.	Use	Comments
04-512-7412	PP+PP			✓	4 x 4 x 250			Incl. Washer
04-512-7103	PP+PP			✓	4 x 1.000			
04-512-7062	PP+PP			✓	4 x 1.000			Incl. Washer
04-512-7052	PP+PP			✓	4 x 1.000			Incl. Washer
04-512-7401	PP+PP			✓	4 x 4 x 250			Incl. Washer
04-512-7105	PP+PP			✓	4 x 1.000			
04-512-7053	PP+PP			✓	4 x 1.000			Incl. Washer
04-512-7403	PP+PP			✓	4 x 4 x 250			Incl. Washer
04-512-7107	PP+PP			✓	4 x 1.000			
04-512-7108	PP+PP			✓	4 x 1.000			
04-512-7055	PP+PP			✓	4 x 1.000			Incl. Washer
04-512-7110	PP+PP			✓	4 x 1.000			
04-512-7063	PP+PP			✓	4 x 1.000			Incl. Washer
04-512-7415	PP+PP			✓	4 x 4 x 250			Incl. Washer
04-512-7059	PP+PP			✓	4 x 1.000			Incl. Washer
04-512-7411	PP+PP			✓	4 x 4 x 250			Incl. Washer
04-512-7112	PP+PP			✓	4 x 1.000			
04-512-7114	PP+PP			✓	4 x 1.000			
04-512-7058	PP+PP			✓	4 x 1.000			Incl. Washer
04-512-7409	PP+PP			✓	4 x 4 x 250			Incl. Washer
04-512-7117	PP+PP			✓	4 x 1.000			
04-512-7405	PP+PP			✓	4 x 4 x 250			Incl. Washer
04-512-7050	PP+PP			✓	4 x 1.000			Incl. Washer

Fits With:



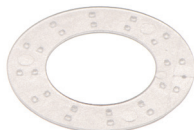
04-510



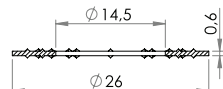
07-512

04-510

### Washer for Ø 12mm Clip Grommet



Washer for use with Ø 12mm clip grommet, when used with thin materials (<0,8mm)



Variant	Material	Shore	Color	Stock	Pack	Prop.	Use	Comments
04-510-1106	EBA			✓	Call for quote			
04-510-1056	EBA			✓	Call for quote			
04-510-1054	EBA			✓	Call for quote			

Fits With:



04-512

Properties:



Cold-resistant



UV-resistant



Oil-resistant


Re-inforced/  
armed

22

Use:



HF-weldable


Ultrasonic  
weldable


Gluable

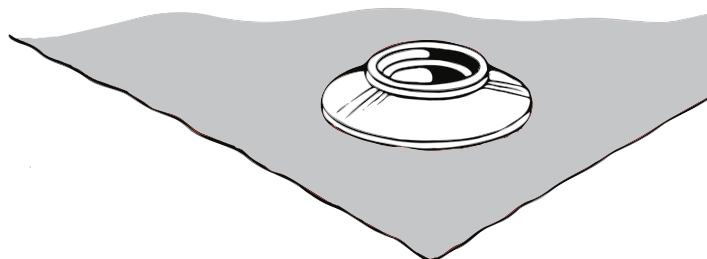
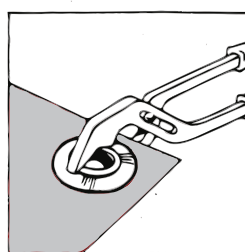
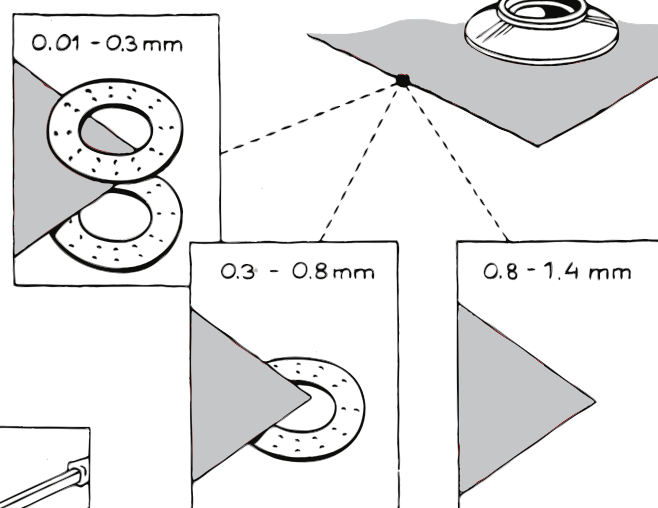
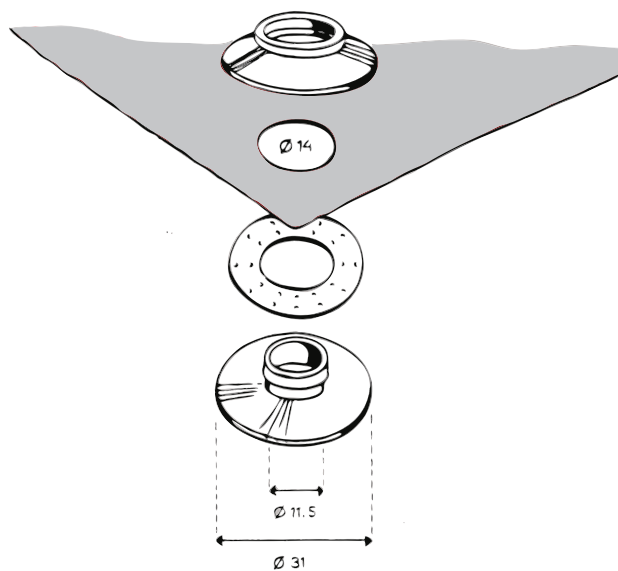
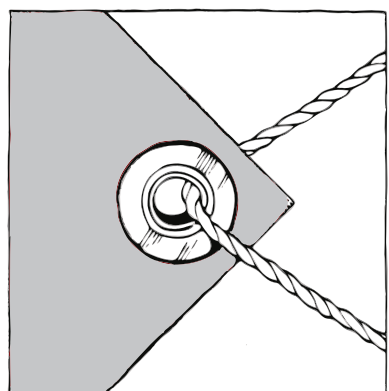
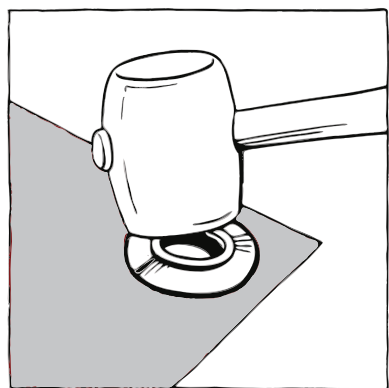
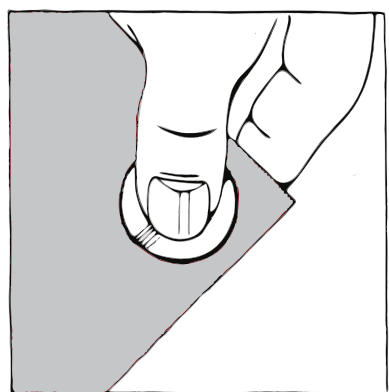
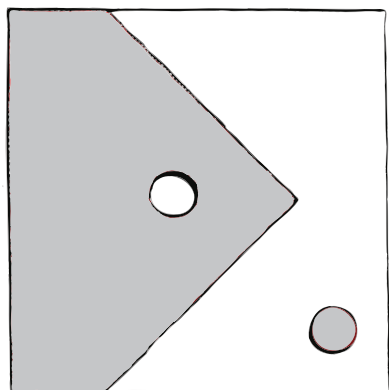


Sterilizable

All geometrical dimensions and functional information are indicative. (Unless tolerances are specified). Carmo is not responsible for misprints and technical changes.



## Using Clip Grommets



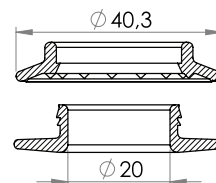
# Grommets and Eyelets

04-522

## Clip Grommet Set, Ø 20mm



Plastic snap grommet for reinforcement of 20mm holes in textiles, awnings, tarpaulins, banners etc. Can be inserted manually. Punched hole Ø 24mm (smaller for flexible material)



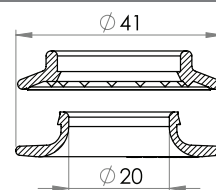
Variant	Material	Shore	Color	Stock	Pack	Prop.	Use	Comments
04-522-7302	PP+PP		□	✓	1 x 2.000			
04-522-7005	PP+PP		□	✓	1 x 2.000			
04-522-7007	PP+PP		■	✓	1 x 2.000			
04-522-7016	PP+PP		■	✓	1 x 2.000			
04-522-7008	PP+PP		■	✓	1 x 2.000			
04-522-7011	PP+PP		■	✓	1 x 2.000			
04-522-7012	PP+PP		■	✓	1 x 2.000			
04-522-7015	PP+PP		■	✓	1 x 2.000			

04-523

## Ventilation Grommet Set, Ø 20mm



Low profile air nozzles for ventilation socks. Optimised hole geometry for low noise.



Variant	Material	Shore	Color	Stock	Pack	Prop.	Use	Comments
04-523-7002	PP+PP		□	✓	4 x 500			
04-523-7005	PP+PP		■	✓	4 x 500			

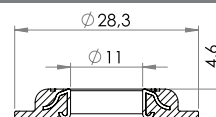
## Metal Reinforced Eyelets

04-283

## Metal Reinforced Eyelet (Pat. Pending).



Get the best from both worlds! The ultimate eyelet for demanding applications. High pull forces and durability. A metal eyelet moulded directly into the plastic eyelet delivers superior strength and durability compared to traditional plastic eyelets.



Variant	Material	Shore	Color	Stock	Pack	Prop.	Use	Comments
04-283-7001	PVC (PY28)	◇	□	✓				

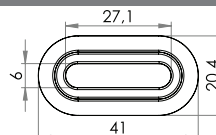
## Eyelets, oval and square

04-134

## Eyelet, oval, 6/27mm



Oval PVC eyelet with square shoulders, for HF welding onto banners, tarpaulins, building wraps etc. 6x27mm hole.



Variant	Material	Shore	Color	Stock	Pack	Prop.	Use	Comments
04-134-1005	PVC (PY28)	◇	□	✓	4 x 3.000		HF-weldable	
04-134-1007	PVC (PY28)	◇	■	✓	4 x 3.000		HF-weldable	

Properties:



24

Use:



All geometrical dimensions and functional information are indicative. (Unless tolerances are specified). Carmo is not responsible for misprints and technical changes.



**carmo**

*Your partner in plastic components*

## **Metal Reinforced Eyelet** (pat. Pending)

- Combining the best from both worlds
- 3 x Stronger than your standard solution

**High Pull Force and Durability**

**Increased Lifetime on your Ropes and Lines**

**Use your existing HF equipment**

**Reduce your number of Production Processes**



25

Carmo A/S, Hoejvangen 19, DK-3060 Espergaerde, Denmark  
T: +45 4912 2100, F: +45 4912 2199, E: [denmark@carmo.dk](mailto:denmark@carmo.dk)  
[www.carmo.dk](http://www.carmo.dk)

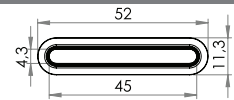
# Grommets and Eyelets

04-140

## Eyelet, oval, light, 4/45mm



Oval PVC eyelet with rounded shoulders for HF welding onto banners, tarpaulins, building wraps etc. 4 x 45mm hole.



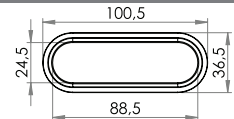
Variant	Material	Shore	Color	Stock	Pack	Prop.	Use	Comments
04-140-1036	PVC (PZ40)	❖	□	🔪	4 x 5.000	❄️	⚡ ⚡ ⚡	

04-141

## Eyelet, oval, light, 24/88mm



Oval PVC eyelet with rounded shoulders for HF welding onto banners, tarpaulins, building wraps etc. 24 x 88mm hole.



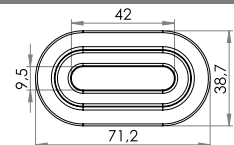
Variant	Material	Shore	Color	Stock	Pack	Prop.	Use	Comments
04-141-1005	PVC/PUR		■	🔪	1 x 2.000		⚡ ⚡ ⚡	

04-204

## Eyelet oval, 9/42mm



Oval PVC eyelet with square shoulders for HF welding onto banners, tarpaulins, building wraps etc. 9 x 42mm hole. Forms a lock with PVC or PVC/PUR cleat 05-446



Variant	Material	Shore	Color	Stock	Pack	Prop.	Use	Comments
04-204-2449	PELD		□	🔪	1 x 2.500		⚡	
04-204-2448	PVC (PH29)	❖	□	🔪	1 x 2.500	❄️ ⚡	⚡ ⚡ ⚡	
04-204-1332	PVC (PY28)	❖	■	✅	1 x 2.500		⚡ ⚡ ⚡	

Fits With:



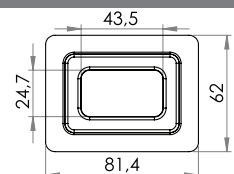
05-446

04-205

## Eyelet, rectangular, 24/43mm



Rectangular PVC eyelet with square shoulders and 24 x 43mm hole. Typically used for hole reinforcements in banners, tarpaulins, building wraps etc.



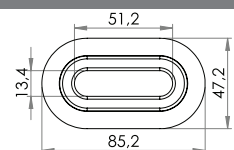
Variant	Material	Shore	Color	Stock	Pack	Prop.	Use	Comments
04-205-2006	PVC (PZ33)	❖	■	🔪	1 x 500	❄️	⚡ ⚡ ⚡	
04-205-2007	PVC (PY47)	❖	■	🔪	1 x 500		⚡ ⚡ ⚡	

04-206

## Eyelet, oval, 13/51mm



Oval PVC eyelet with square shoulders for HF welding onto banners, tarpaulins, building wraps etc. 13 x 51mm hole. Forms a lock with cleat 05-646



Variant	Material	Shore	Color	Stock	Pack	Prop.	Use	Comments
04-206-3015	PVC (PY28)	❖	■	🔪	1 x 1.200		⚡ ⚡ ⚡	
04-206-3003	PVC (PZ33)	❖	■	🔪	1 x 1.200	❄️	⚡ ⚡ ⚡	
04-206-3005	PVC (PY28)	❖	■	✅	1 x 1.200		⚡ ⚡ ⚡	
04-206-3011	PVC (PY28)	❖	■	🔪	1 x 1.200		⚡ ⚡ ⚡	
04-206-3021	PVC/PUR	❖	■	🔪	1 x 1.200		⚡ ⚡ ⚡	

Fits With:



05-646



05-046

**Properties:**


26

**Use:**

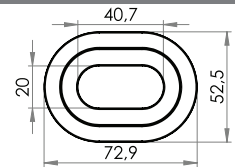

All geometrical dimensions and functional information are indicative. (Unless tolerances are specified). Carmo is not responsible for misprints and technical changes.

# Grommets and Eyelets

04-403

**Eyelet, oval, 20/40mm**


Oval PVC eyelet with square shoulders for HF welding onto banners, tarpaulins, building wraps etc. 20 x 40mm hole. Specially developed for both plastic and metal TIR turn-buckles.



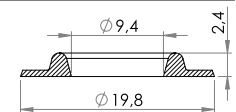
Variant	Material	Shore	Color	Stock	Pack	Prop.	Use	Comments
04-403-1001	PVC (PY28)	⊠	■	✓	1 x 2.000		HF	

## Weldable Eyelets, round, round shoulders

04-121

**Eyelet, 3/8" (9,5mm)**


3/8" (9,5 mm) plastic eyelet with round shoulders. Optimised for High Frequency (HF) welding.

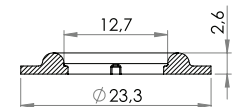


Variant	Material	Shore	Color	Stock	Pack	Prop.	Use	Comments
04-121-2001	PVC (PZ33)	⊠	□	✓	4 x 10.000	✱	HF	
04-121-2011	PVC (PZ33)	⊠	■	✓	4 x 10.000	✱	HF	
04-121-1008	PVC/PUR	⊠	□	✓	4 x 10.000		HF	

04-122

**Eyelet, 1/2"**


1/2" plastic eyelet with round shoulders. Optimised for High Frequency (HF) welding.

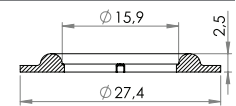


Variant	Material	Shore	Color	Stock	Pack	Prop.	Use	Comments
04-122-3002	PVC (PZ33)	⊠	□	✓	4 x 7.000		HF	

04-123

**Eyelet, 5/8" (15,8mm)**


5/8" (15,8mm) plastic eyelet with round shoulders. Optimised for High Frequency (HF) welding.

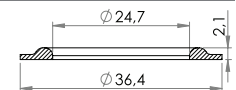


Variant	Material	Shore	Color	Stock	Pack	Prop.	Use	Comments
04-123-1001	PVC (PZ33)	⊠	□	✓	4 x 4.000	✱	HF	

04-125

**Eyelet, 1" (25 mm)**


1" (25 mm) plastic eyelet with round shoulders. Optimised for High Frequency (HF) welding.



Variant	Material	Shore	Color	Stock	Pack	Prop.	Use	Comments
04-125-1002	PUR		■	✓	4 x 3.000			
04-125-1001	PVC (PZ33)	⊠	□	✓	4 x 3.000	✱	HF	

# Grommets and Eyelets

## Weldable eyelets, round, square shoulders

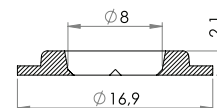
04-100

### Eyelet, 8mm



8mm plastic eyelet with square shoulders. Optimised for High Frequency (HF) welding.

Variant	Material	Shore	Color	Stock	Pack	Prop.	Use	Comments
04-100-4083	PVC (PZ33)	⬢	□	✓	4 x 15.000	✱	⚡	



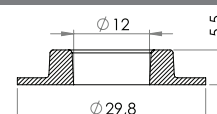
04-101

### Eyelet, heavy, 11/30mm



11/30mm PVC eyelet with square shoulders. Heavy duty design for demanding applications. Optimised for High Frequency (HF) welding.

Variant	Material	Shore	Color	Stock	Pack	Prop.	Use	Comments
04-101-1102	PVC (PG47)	⬢	□	✓	4 x 2.000		⚡	



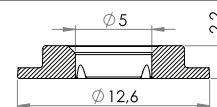
04-111

### Eyelet, 5mm



5mm plastic eyelet with square shoulders. Optimised for High Frequency (HF) welding.

Variant	Material	Shore	Color	Stock	Pack	Prop.	Use	Comments
04-111-2002	PVC (PZ33)	⬢	□	✓	5 x 20.000	✱	⚡	
04-111-2004	PVC/PUR	⬢	□	✓	5 x 20.000		⚡	



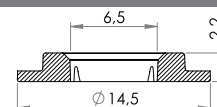
04-112

### Eyelet, 6,5mm



6,5mm plastic eyelet with square shoulders. Typically used as hole reinforcements in banners, tarpaulins, building wraps etc.

Variant	Material	Shore	Color	Stock	Pack	Prop.	Use	Comments
04-112-2001	PVC (PZ33)	⬢	□	✓	4 x 20.000	✱	⚡	



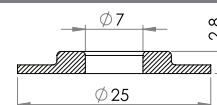
04-274

### Eyelet, heavy, 7/25mm



7/25mm heavy duty plastic eyelet, with square shoulders. Optimised for HF welding. Typically used for hole reinforcements in banners, tarpaulins, building wraps etc.

Variant	Material	Shore	Color	Stock	Pack	Prop.	Use	Comments
04-274-1002	PVC (PZ33)	⬢	□	✓	5 x 5.000	✱	⚡	



Properties:



Cold-resistant



UV-resistant



Oil-resistant


Re-inforced/  
armed

28

Use:



HF-weldable


Ultrasonic  
weldable


Glueable



Sterilizable

All geometrical dimensions and functional information are indicative. (Unless tolerances are specified). Carmo is not responsible for misprints and technical changes.



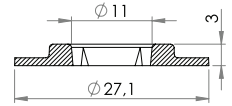
# Grommets and Eyelets

04-275

## Eyelet, heavy, 11/27mm



11/27mm heavy duty plastic eyelet with square shoulders. Optimised for HF welding and use in automatic machines



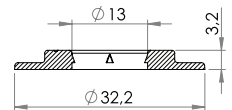
Variant	Material	Shore	Color	Stock	Pack	Prop.	Use	Comments
04-275-1318	PELD				4 x 4.000			Bulk
04-275-1322	PVC (PG47)				4 x 4.000			Bulk
04-275-1353	PVC (PY28)				80 x 175			Stacked
04-275-1303	PVC (PY28)				4 x 4.000			Bulk
04-275-1354	PVC (PY28)				80 x 175			Stacked
04-275-1312	PVC (PY28)				4 x 4.000			Bulk
04-275-1304	PVC (PY28)				4 x 4.000			Bulk
04-275-1356	PVC (PY28)				80 x 175			Stacked
04-275-1310	PVC (PY28)				4 x 4.000			Bulk
04-275-1315	PVC/PUR				4 x 4.000			Bulk
04-275-1359	PVC/PUR				80 x 175			Stacked

04-276

## Eyelet, heavy, 13/32mm, Stacked



13/32mm heavy duty plastic eyelet with square shoulders. Optimised for HF welding and use in automatic machines.



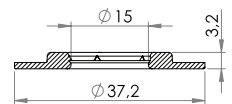
Variant	Material	Shore	Color	Stock	Pack	Prop.	Use	Comments
04-276-2051	PVC (PZ33)				46 x 174			
04-276-2001	PVC (PH29)				46 x 174			

04-277

## Eyelet, heavy, 15/37mm, Stacked



15/37mm heavy duty plastic eyelet with square shoulders. Optimised for HF welding and use in automatic machines



Variant	Material	Shore	Color	Stock	Pack	Prop.	Use	Comments
04-277-3201	PELD				29 x 168			
04-277-3106	PVC (PZ33)				29 x 168			
04-277-3200	PVC (PY29)				29 x 168			
04-277-3118	PVC (PY28)				29 x 168			
04-277-1003	PVC (PY28)				29 x 168			
04-277-1028	PVC/PUR				29 x 168			

Fits With:



05-200

Properties:



29

Use:



All geometrical dimensions and functional information are indicative. (Unless tolerances are specified). Carmo is not responsible for misprints and technical changes.

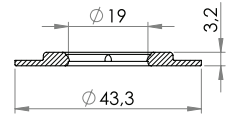
# Grommets and Eyelets

04-278

## Eyelet, heavy, 19/43mm, Stacked



19/43mm heavy duty plastic eyelet with square shoulders. Optimised for HF welding and use in automatic machines.



Variant	Material	Shore	Color	Stock	Pack	Prop.	Use	Comments
04-278-1026	PELD				32 x 175			
04-278-1003	PVC (PZ33)				32 x 175			
04-278-1012	PVC (PY28)				32 x 175			
04-278-1040	PVC (PY28)				32 x 175			
04-278-1055	PVC (PY28)				32 x 175			
04-278-1041	PVC (PY28)				32 x 175			
04-278-1057	PVC (PY28)				32 x 175			
04-278-1010	PVC (PY28)				32 x 175			
04-278-1030	PVC (PY28)				32 x 175			
04-278-1006	PVC (PY28)				32 x 175			
04-278-1008	PVC (PY28)				32 x 175			
04-278-1050	PVC/PUR				32 x 175			

Fits With:



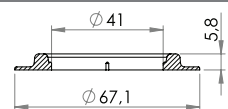
05-200

04-279

## Eyelet, 40/67mm, heavy



40/67mm heavy duty plastic eyelet with square shoulders. Optimised for HF welding.



Variant	Material	Shore	Color	Stock	Pack	Prop.	Use	Comments
04-279-1011	PVC (PY28)				1 x 1.500			
04-279-1003	PVC (PY28)				1 x 1.500			

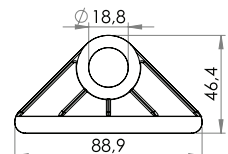
## Ready to use eyelet borders and corners

04-105

## Triangular attachment eyelet



PVC corner, widely used for attaching guy lines to tents, marquees, tarpaulins. Can be either HF welded or sewn on.



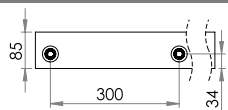
Variant	Material	Shore	Color	Stock	Pack	Prop.	Use	Comments
04-105-2000	PVC (PZ33)				4 x 1.000			

04-601

## Eyelet Border, 85mm x 50m roll



Eyelet border with pre-welded PVC eyelets - Simply align, overlap edges and weld or simply sew up! White PVC with natural colour eyelets.



Variant	Material	Shore	Color	Stock	Pack	Prop.	Use	Comments
04-601-7277					1 x 50m			

Properties:



Cold-resistant



UV-resistant



Oil-resistant


Re-inforced/  
armed

30

Use:



HF-weldable


Ultrasonic  
weldable


Gluable



Sterilizable

All geometrical dimensions and functional information are indicative. (Unless tolerances are specified). Carmo is not responsible for misprints and technical changes.

# Cleats and Linesupport

## Cleats

05-046

### Cleat/line Support, heavy duty

Heavy duty cleat/line support with oval hole. HF weldable to PVC sheets and foils.

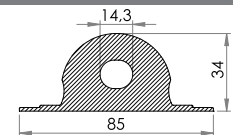


Variant	Material	Shore	Color	Stock	Pack	Prop.	Use	Comments
05-046-1003	PVC (PY28)	⊠	■	✓	1 x 600		HF	Δ

Fits With:



04-206



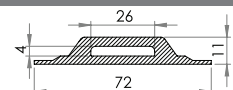
05-441

### Cleat, 26/4mm

HF weldable plastic cleat suitable for 1" (25mm) webbing



Variant	Material	Shore	Color	Stock	Pack	Prop.	Use	Comments
05-441-2510	PVC (PY28)	⊠	■	✓	1 x 1.000		HF	Δ
05-441-2511	PVC (PY28)	⊠	■	✓	1 x 1.000		HF	Δ
05-441-2512	PVC/PUR	⊠	■	✓	1 x 1.000		HF	Δ



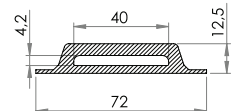
05-442

### Cleat, 40/4mm

Reinforced HF weldable plastic cleat, suitable for 1½" (38mm) webbing.



Variant	Material	Shore	Color	Stock	Pack	Prop.	Use	Comments
05-442-1003	PVC (PY28)	⊠	■	✓	1 x 1.500		HF	Δ
05-442-1005	PVC/PUR	⊠	■	✓	1 x 1.500		HF	Δ



05-446

### Cleat, 26/15mm

Multi purpose plastic cleat that can be HF welded onto PVC and PVC/PUR foils and material.

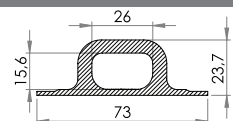


Variant	Material	Shore	Color	Stock	Pack	Prop.	Use	Comments
05-446-3003	PVC/PUR	⊠	■	✓	1 x 1.000		HF	Δ
05-446-3000	PVC/PUR	⊠	■	✓	1 x 1.000		HF	Δ

Fits With:



04-204



Properties:



Cold-resistant



UV-resistant



Oil-resistant


Re-inforced/  
armed

31

Use:



HF-weldable


Ultrasonic  
weldable


Gluable



Sterilizable

All geometrical dimensions and functional information are indicative. (Unless tolerances are specified). Carmo is not responsible for misprints and technical changes.

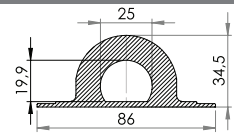
# Cleats and Linesupport

05-646

## Cleat, 25/20mm



A multi purpose HF weldable cleat for attachment of ropes, straps, hooks and carabiners.



Variant	Material	Shore	Color	Stock	Pack	Prop.	Use	Comments
05-646-2211	PEHD				1 x 600			
05-646-2207	PVC (PY28)	❖	■	✓	1 x 600		⚡ ⚡ ⚡	
05-646-2034	PVC (PZ33)	❖	■	✓	1 x 600	❄	⚡ ⚡ ⚡	
05-646-2202	PVC (PY28)	❖	■	✓	1 x 600		⚡ ⚡ ⚡	
05-646-2210	PVC/PUR	❖	■	✓	1 x 600		⚡ ⚡ ⚡	
05-646-2212	PVC/PUR	❖	■	✓	1 x 600		⚡ ⚡ ⚡	

Fits With:



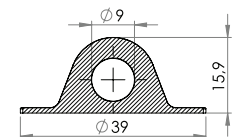
## Linesupport and Handles

05-146

## Line Support, round base, 9/39mm.



HF weldable line support with 39mm round base, suitable for rope or shock cord with diameter up to Ø 9mm.



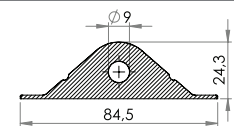
Variant	Material	Shore	Color	Stock	Pack	Prop.	Use	Comments
05-146-2204	PVC (PG57)	❖	■	✓	1 x 3.000		⚡ ⚡ ⚡	
05-146-2202	PVC (PG57)	❖	■	✓	1 x 3.000		⚡ ⚡ ⚡	
05-146-2207	PVC/PUR	❖	■	✓	1 x 3.000		⚡ ⚡ ⚡	

05-147

## Line Support, 9/85mm



HF weldable line support suitable for use with rope or shock cord of diameter up to 9mm.



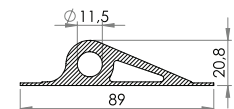
Variant	Material	Shore	Color	Stock	Pack	Prop.	Use	Comments
05-147-1304	PVC (PY28)	❖	■	✓	1 x 1.000		⚡ ⚡ ⚡	
05-147-2001	PVC (PG57)	❖	■	✓	1 x 1.000		⚡ ⚡ ⚡	

05-148

## Line Support, 12/90mm



HF weldable PVC line support, with a rectangular base. suitable for use with rope or shock cord of diameter up to 11mm.



Variant	Material	Shore	Color	Stock	Pack	Prop.	Use	Comments
05-148-2005	PVC (PY28)	❖	■	✓	1 x 800		⚡ ⚡ ⚡	
05-148-2002	PVC (PY28)	❖	■	✓	1 x 800		⚡ ⚡ ⚡	

**Properties:**


32

**Use:**


All geometrical dimensions and functional information are indicative. (Unless tolerances are specified). Carmo is not responsible for misprints and technical changes.

# Cleats and Linesupport

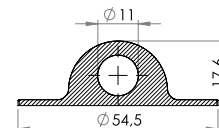
05-246

## Line Support, round base, 11/55mm



HF weldable linesupport, 56 mm round base suitable for use with rope or shock cord of diameter up to 11mm.

Variant	Material	Shore	Color	Stock	Pack	Prop.	Use	Comments
05-246-2106	PVC (PG57)	❖	□	✓	1 x 1.600		HF	Δ
05-246-3104	PVC (PG57)	❖	□	✓	1 x 1.600		HF	Δ
05-246-3106	PVC (PG57)	❖	■	✓	1 x 1.600		HF	Δ
05-246-3102	PVC (PG57)	❖	■	✓	1 x 1.600		HF	Δ



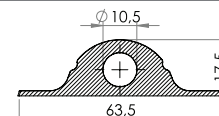
05-247

## Line Support, round base 11/64mm



HF weldable linesupport. For rope, wire or shock cord up to 11 mm. 65mm round base.

Variant	Material	Shore	Color	Stock	Pack	Prop.	Use	Comments
05-247-2114	PVC (PY28)	❖	□	✓	1 x 1.200		HF	Δ
05-247-2106	PVC (PG47)	❖	□	✓	1 x 1.200		HF	Δ
05-247-2102	PVC (PY28)	❖	■	✓	1 x 1.200		HF	Δ
05-247-2115	PVC (PG57)	❖	■	✓	1 x 1.200		HF	Δ
05-247-2103	PVC (PG47)	❖	■	✓	1 x 1.200		HF	Δ
05-247-2117	PVC (PY28)	❖	■	✓	1 x 1.200		HF	Δ
05-247-2110	PVC/PUR	❖	■	✓	1 x 1.200		HF	Δ



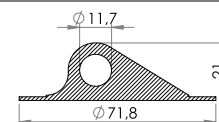
05-248

## Line Support, round base, 11/72mm



High frequency weldable PVC/PUR line support. Can be used with rope or shock cord. of diameter up to 11mm. 72mm round base

Variant	Material	Shore	Color	Stock	Pack	Prop.	Use	Comments
05-248-1005	PVC/PUR	❖	■	✓	1 x 1.000		HF	Δ



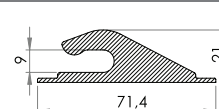
05-431

## Tarpaulin Hook



High frequency weldable PVC hook for up to 8mm diameter rope or shock cord.

Variant	Material	Shore	Color	Stock	Pack	Prop.	Use	Comments
05-431-1009	PVC (PY28)	❖	■	✓	1 x 1.250		HF	Δ
05-431-1003	PVC (PY28)	❖	■	✓	1 x 1.250		HF	Δ



## Related Parts

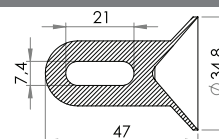
05-145

## Corner and Loop



Weldable corner with loop for use on tents, for attachment of guy ropes and lines

Variant	Material	Shore	Color	Stock	Pack	Prop.	Use	Comments
05-145-1101	PVC (PG57)	❖	□	✓	1 x 2.500		HF	Δ


**Properties:**


33

**Use:**


All geometrical dimensions and functional information are indicative. (Unless tolerances are specified). Carmo is not responsible for misprints and technical changes.

# Cleats and Linesupport

05-200

## Car-Lo Lock Clamp with Plug



Clamp for attaching banners, tarpaulins etc.

Variant	Material	Shore	Color	Stock	Pack	Prop.	Use	Comments
05-200-2103	PEHD		■	✓	1 x 1.800			
05-200-2101	PEHD		■	✓	1 x 1.800			

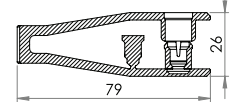
Fits With:



04-277



04-278



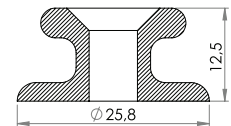
05-201

## Anchoring Point for Ladderstrap



A versatile attachment point for rope, shock cord, straps etc. for securing tarpaulins, banners, trailer covers.

Variant	Material	Shore	Color	Stock	Pack	Prop.	Use	Comments
05-201-1102	PEHD		■	✓	2 x 2.500			



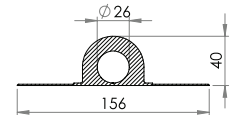
05-684

## Rowlock, solid



Plastic rowlock for use on inflatables, dinghies, boats etc. HF Weldable

Variant	Material	Shore	Color	Stock	Pack	Prop.	Use	Comments
05-684-1040	PVC (PZ40)	◆	■	✓	1 x 225	✱	✱ ✱ ✱	



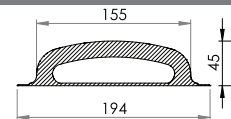
05-686

## Handle



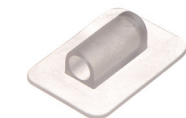
Handle for use on inflatables, dinghies, boats, Gym mattresses etc.

Variant	Material	Shore	Color	Stock	Pack	Prop.	Use	Comments
05-686-1211	PVC (PF60)	◆	■	✓	1 x 125	✱	✱ ✱ ✱	
05-686-1206	PVC (PF60)	◆	■	✓	1 x 125	✱	✱ ✱ ✱	



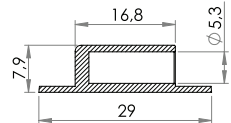
05-996

## Umbrella Tip



Weldable anchor point, suitable for structures stiffened with Ø 5mm rods, e.g. Umbrellas, tents, covers etc.

Variant	Material	Shore	Color	Stock	Pack	Prop.	Use	Comments
05-996-1002	PVC (PZ33)	◆	■	✓	1 x 10.000	✱	✱ ✱ ✱	



06-215

## Shroud, 2 holes



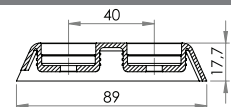
Shroud for bolts. For use on curtain side truck trailers

Variant	Material	Shore	Color	Stock	Pack	Prop.	Use	Comments
06-215-2152	PELD		■	✓	1 x 700			

Fits With:



06-216



06-216

## Cap for Schroud 06-215



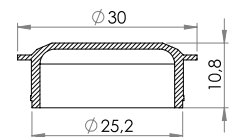
Cap to cover bolt installation holes. Secure press-fit.

Variant	Material	Shore	Color	Stock	Pack	Prop.	Use	Comments
06-216-1102	PEHD		■	✓	4 x 1.400			

Fits With:



06-215



Properties:



34

Use:



All geometrical dimensions and functional information are indicative. (Unless tolerances are specified). Carmo is not responsible for misprints and technical changes.



# Miscellaneous Products

## Curtain Rings etc.

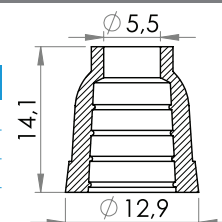
06-739

### Tassel, 5,2mm



Plastic Tassel for cord end finishing

Variant	Material	Shore	Color	Stock	Pack	Prop.	Use	Comments
06-739-1201	PEHD		<input type="checkbox"/>	✓	4 x 5.000			
06-739-1213	PEHD		<input checked="" type="checkbox"/>	✓	4 x 5.000			
06-739-1203	PEHD		<input checked="" type="checkbox"/>	✓	4 x 5.000			



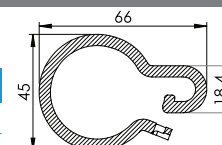
06-141

### Curtain Hanger



One piece plastic curtain hanger, simply clips together

Variant	Material	Shore	Color	Stock	Pack	Prop.	Use	Comments
06-141-2001	ABS		<input type="checkbox"/>	✓	1 x 5.000			



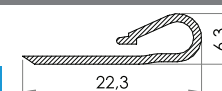
06-901

### Curtain Rail



Plastic connection seam for joining sheets, curtains etc.

Variant	Material	Shore	Color	Stock	Pack	Prop.	Use	Comments
06-901-1012	PELD		<input type="checkbox"/>	✓	4x100m		☞	



## Nylon Rings

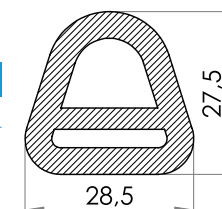
06-811

### A-Ring, 20mm



PA nylon A-ring suitable for 20mm webbing.

Variant	Material	Shore	Color	Stock	Pack	Prop.	Use	Comments
06-811-1102	PA		<input type="checkbox"/>	✓	4 x 3.000			



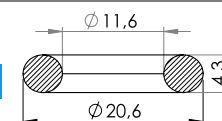
06-821

### Ring, 12/21mm



Nylon (PA) ring with 12mm inner diameter.

Variant	Material	Shore	Color	Stock	Pack	Prop.	Use	Comments
06-821-1005	PA		<input checked="" type="checkbox"/>	✓	4 x 5.000			
06-821-1004	PA		<input checked="" type="checkbox"/>	✓	4 x 5.000			



Properties:



35

Use:



All geometrical dimensions and functional information are indicative. (Unless tolerances are specified). Carmo is not responsible for misprints and technical changes.

# Miscellaneous Products

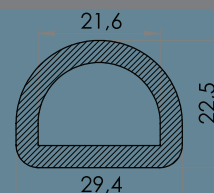
06-832

## D-Ring, 22mm

22mm nylon D-ring for use as attachment ring, webbing attachment etc.



Variant	Material	Shore	Color	Stock	Pack	Prop.	Use	Comments
06-832-1002	PA		■	✓	4 x 3.000			



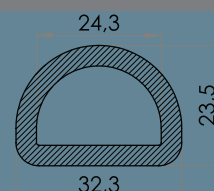
06-833

## D-Ring, 25mm

25mm nylon D-ring for use as attachment ring, webbing attachment etc.



Variant	Material	Shore	Color	Stock	Pack	Prop.	Use	Comments
06-833-1001	PA		■	✓	4 x 3.000			



## Suction Cups

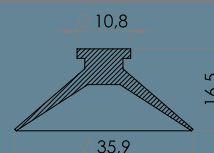
05-132

## Suction Cup

Plastic suction cup



Variant	Material	Shore	Color	Stock	Pack	Prop.	Use	Comments
05-132-2002	PVC (PG75)	◆	■	✓	1 x 4.000			
05-132-2004	PVC (PG75)	◆	■	✓	1 x 4.000			



Fits With:

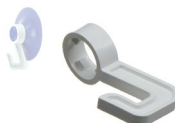


05-932

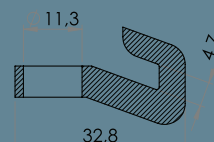
05-932

## Hook for Suction Cup

Plastic hook for use with suction cup



Variant	Material	Shore	Color	Stock	Pack	Prop.	Use	Comments
				✓	4 x 2.500			



Fits With:



05-132

## Miscellaneous

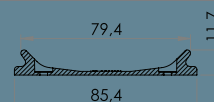
06-761

## Binder Loop Stabilisor

Loop stabiliser for binders/ lever arch files.



Variant	Material	Shore	Color	Stock	Pack	Prop.	Use	Comments
06-761-1201	PEHD		■	✓	1 x 5.000			



Properties:



Cold-resistant



UV-resistant



Oil-resistant


Re-inforced/  
armed

36

Use:



HF-weldable


Ultrasonic  
weldable


Gluable



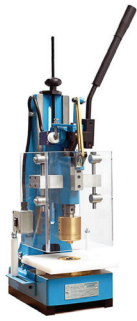
Sterilizable

All geometrical dimensions and functional information are indicative. (Unless tolerances are specified). Carmo is not responsible for misprints and technical changes.



## EP3

### Manual welding tool for eyelets



Manual single and double sided welding. Must be attached to HF generator. Additional electrodes sold separately

Variant	Material	Shore	Color	Stock	Pack	Prop.	Use	Comments
07-749-7001				✓	1 x 1			

### Welding Tools

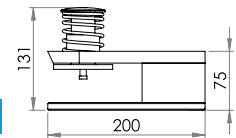
## UG4

### Electrodestand for HF bar welders



For welding Carmo eyelets, rope holder and cleats, in existing bar welders. Electrodes sold separately depending on geometry of parts to weld

Variant	Material	Shore	Color	Stock	Pack	Prop.	Use	Comments
07-711-0040				✓	1 x 1			M50
07-711-0030				✓	1 x 1			M30
07-711-0020				✓	1 x 1			M20



### Carmo Clip Tool

## 07-512

### Clip Fitting Tool for 12mm Clip Grommets (04-512)



The Carmo Clip fitting tool is a manual tool for small scale production or field repairs of plastic grommets and our line of PVC clip grommets / snap grommets.

Variant	Material	Shore	Color	Stock	Pack	Prop.	Use	Comments
07-512-7001				✓	1 x 1			

Fits With:



04-512

### Carmo Seal

## 06-926

### Carmo Seal



PVC Glue for soft PVC and PUR. Please note: Class 3 hazardous goods. Special shipping requirements and fees apply.

Variant	Material	Shore	Color	Stock	Pack	Prop.	Use	Comments
06-926-1001				✓	1 x 1			40 ml tube
06-926-2002				✓	1 x 1			1 L can

Properties:



38

Use:



All geometrical dimensions and functional information are indicative. (Unless tolerances are specified). Carmo is not responsible for misprints and technical changes.

### Focus on You - our Customer

- We work for our customers and with our customers.
- We honour agility and take pride in keeping our promises
- We are a Team of diverse, experienced and dedicated professionals.

### Quality Certification to suit Global Medico Companies

- We have chosen quality to be the keyword for our production.
- We have been ISO certified since 1993
- Today, we are certified according to ISO 13485:2016

### Experts in High Frequency Welding

- We have a generation of experience in high frequency welding.
- We offer a wide range of electrodes for our components.
- We offer punch and weld machines with both manual and automatic feeding

### Customised Materials

- We work in all technical plastics – including TPE
- 60 years of experience in fine-tuning recipes to attain specific properties and functionality
- Extensive know-how on property change in materials in harsh environments like maritime operations and medico sterilisation
- We continue to maintain PVC as a core competence

### Cutting edge Automation and Assembly

- We leverage robotics technology to its utmost, to limit manual operations, errors and contamination of our components
- Dedicated and generic robots from 2 to 6 axis
- Automated pick-and-place, assembly and quality control
- Advanced vision technology for flexibility and agility

### Advanced Injection Moulding

- Machines covering 15 – 250 tonnes
- Single component, 1.5 component and 2 component injection moulding
- Experienced in advanced mould technology including Cube moulds and Spin-stacks
- Cleanroom conditions guaranteed to class 10.000 (ISO class 8)

### Flexible Deliveries from own Warehouses

- We carry stock on the majority of our standard components.
- 90% of our orders are fulfilled within 5 business days
- If needed, we can offer shipments of small quantities
- For prototype and evaluation, contact us for samples.



Claus Steenstrup Ishøy  
CEO & Owner





# Contact Carmo



## Denmark

Carmo A/S  
Hoejvangen 19  
DK 3060 Espergaerde  
DENMARK  
T: +45 4912 2100  
F: +45 4912 2199  
E: [denmark@carmo.dk](mailto:denmark@carmo.dk)  
[www.carmo.dk](http://www.carmo.dk)



## France

Carmo S.A.R.L.  
Z.I. de Vaux le Penil, 64, rue du Général Malterre 77000 Melun  
FRANCE  
T: +33 (0)1 6479 8900  
F: +33 (0)1 6479 8909  
E: [france@carmo.dk](mailto:france@carmo.dk)  
[www.carmo.dk](http://www.carmo.dk)



## USA

Distributor of Carmo products in the USA:  
Kabar Manufacturing Corp.  
140 Schmitt Blvd. Farmingdale, N.Y. 11735  
USA  
T: +1 631 694 6857  
F: +1 631 694 6846  
E: [USA@carmo.dk](mailto:USA@carmo.dk)  
[www.cosmos-kabar.com](http://www.cosmos-kabar.com)



## Ultraplast-Denmark

Hofstätter & Ebbesen A/S  
Hoejvangen 19  
DK 3060 Espergaerde  
DENMARK  
T: +45 49 12 21 22  
F: +45 49 12 21 99  
E: [info@ultraplast.dk](mailto:info@ultraplast.dk)  
[www.ultraplast.dk](http://www.ultraplast.dk)

All measurements are indicative only. For exact measurements, tolerances, critical applications and integrations, please contact sales.

Subject to printing errors.

Published October 2019