

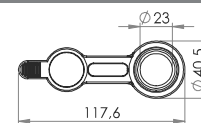
Valves

Misc. Valves

09-675
Filler/Drain Port, 23 mm

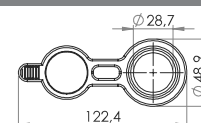

23 mm filler and drain valve for use in medical and blood bags

Variant	Material	Shore	Color	Stock	Pack	Prop.	Use	Comments
09-675-1080	PVC (PZ47)	◆	□	↷	1 x 1.000		⊗ ⊕	
09-675-1077	PVC (PG47)	◆	■	↷	1 x 1.000		⊗ ⊕	
09-675-1036	PVC (PG47)	◆	■	↷	1 x 1.000		⊗ ⊕	
09-675-1032	PVC/PUR	◆	□	↷	1 x 1.000		⊗ ⊕	
09-675-1039	PVC/PUR	◆	■	↷	1 x 1.000		⊗ ⊕	


09-677
Filler/Drain Port, 28 mm


28 mm filler and drain valve for use in medical and blood bags and feeding systems

Variant	Material	Shore	Color	Stock	Pack	Prop.	Use	Comments
09-677-1124	PVC (PG47)	◆	■	✓	1 x 700		⊗ ⊕	
09-677-1128	PVC/PUR	◆	■	↷	1 x 700		⊗ ⊕	
09-677-1130	PVC/PUR	◆	■	↷	1 x 700		⊗ ⊕	

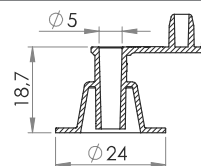


Valves for inflatables

03-305
Inflation Valve, free-flow, fixed plug, 5mm inlet

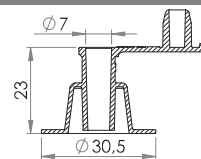

HF/ultrasonic weldable inflation valve, 5mm inlet with integrated plug. Free-flow for rapid inflation and deflation.

Variant	Material	Shore	Color	Stock	Pack	Prop.	Use	Comments
03-305-0001	PVC (PG99)	◆	□	✓	1 x 7.000		⊗ ⊕	
03-305-0005	PVC (PG99)	◆	■	↷	1 x 7.000		⊗ ⊕	
03-305-0003	PVC/PUR	◆	□	↷	1 x 7.000		⊗ ⊕	


03-307
Inflation Valve, free-flow, fixed plug, 7mm


Valve for inflatables with fixed plug and 7mm inlet. Optimised for HF/RF welding. Replaces 03-612.

Variant	Material	Shore	Color	Stock	Pack	Prop.	Use	Comments
03-307-0001	PVC (PG75)	◆	□	✓	1 x 4.000		⊗ ⊕	
03-307-0002	PVC (PZ90)	◆	□	✓	1 x 4.000		⊗ ⊕	Phthalate free , EN71-3
03-307-0003	PVC/PUR	◆	□	↷	1 x 4.000		⊗ ⊕	


Properties:

20
Use:

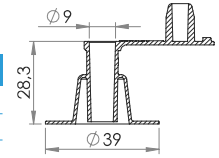

All geometrical dimensions and functional information are indicative. (Unless tolerances are specified). Carmo is not responsible for misprints and technical changes.

Valves

03-309
Inflation Valve, free-flow, fixed plug, 9mm inlet

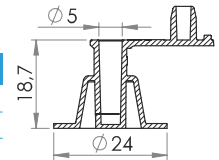

HF/ultrasonic weldable PVC inflation valve with fixed plug and 9mm inlet.

Variant	Material	Shore	Color	Stock	Pack	Prop.	Use	Comments
03-309-0001	PVC (PG75)	◆	□	✓	1 x 2.000		HF	∅
03-309-0002	PVC (PG75)	◆	■	✓	1 x 2.000		HF	∅
03-309-0004	PVC/PUR	◆	□	✓	1 x 2.000		HF	∅


03-325
Inflation Valve, non-return, fixed plug, 5mm inlet

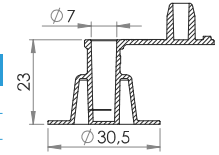

HF/ultrasonic weldable plastic inflation valve with non-return feature.

Variant	Material	Shore	Color	Stock	Pack	Prop.	Use	Comments
03-325-0001	PVC (PG99)	◆	□	✓	1 x 7.000		HF	∅
03-325-0003	PVC/PUR	◆	□	✓	1 x 7.000		HF	∅
03-325-0004	PVC/PUR	◆	■	✓	1 x 7.000		HF	∅


03-327
Inflation Valve, non-return, fixed plug, 7mm inlet

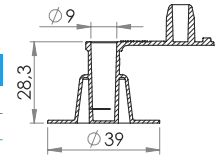

HF/ultrasonic weldable valve for inflatables.

Variant	Material	Shore	Color	Stock	Pack	Prop.	Use	Comments
03-327-0001	PVC (PG75)	◆	□	✓	1 x 4.000		HF	∅
03-327-0003	PVC/PUR	◆	□	✓	1 x 4.000		HF	∅
03-327-0004	PVC/PUR	◆	■	✓	1 x 4.000		HF	∅


03-329
Inflation Valve, non-return, fixed plug, 9mm inlet

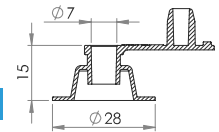

HF/ultrasonic weldable inflation valve, with non-return feature, with fixed plug.

Variant	Material	Shore	Color	Stock	Pack	Prop.	Use	Comments
03-329-0001	PVC (PG90)	◆	□	✓	1 x 2.000		HF	∅
03-329-0002	PVC/PUR	◆	□	✓	1 x 2.000		HF	∅


03-207
Low-profile inflation Valve, free-flow, fixed plug, 7mm

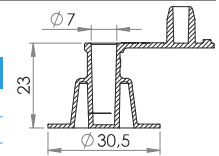

Valve for inflatables with fixed plug and 7mm inlet. Optimised for HF/RF welding. Low profile for use in compact designs.

Variant	Material	Shore	Color	Stock	Pack	Prop.	Use	Comments
03-207-0001	PVC (PG75)	◆	□	✓	1 x 4.000		HF	∅


03-327
Inflation Valve, non-return, fixed plug, 7mm inlet


HF/ultrasonic weldable valve for inflatables.

Variant	Material	Shore	Color	Stock	Pack	Prop.	Use	Comments
03-327-0001	PVC (PG75)	◆	□	✓	1 x 4.000		HF	∅
03-327-0003	PVC/PUR	◆	□	✓	1 x 4.000		HF	∅
03-327-0004	PVC/PUR	◆	■	✓	1 x 4.000		HF	∅



Properties:
❄ Cold-resistant
☀ UV-resistant
🛡 Oil-resistant
🔪 Re-reinforced/armed
21
Use:
HF-weldable
Ultrasound-weldable
Glueable
Sterilizable

All geometrical dimensions and functional information are indicative. (Unless tolerances are specified). Carmo is not responsible for misprints and technical changes.