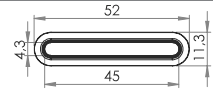


Grommets and Eyelets

04-140
Eyelet, oval, light, 4/45mm

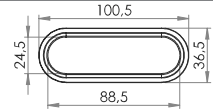

Oval PVC eyelet with rounded shoulders for HF welding onto banners, tarpaulins, building wraps etc. 4 x 45mm hole.



Variant	Material	Shore	Color	Stock	Pack	Prop.	Use	Comments
04-140-1036	PVC (PZ40)	❖	□	↷	4 x 5.000	✳	⊗ ⊕	

04-141
Eyelet, oval, light, 24/88mm

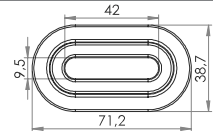

Oval PVC eyelet with rounded shoulders for HF welding onto banners, tarpaulins, building wraps etc. 24 x 88mm hole.



Variant	Material	Shore	Color	Stock	Pack	Prop.	Use	Comments
04-141-1005	PVC/PUR		■	↷	1 x 2.000		⊗ ⊕	

04-204
Eyelet oval, 9/42mm


Oval PVC eyelet with square shoulders for HF welding onto banners, tarpaulins, building wraps etc. 9 x 42mm hole. Forms a lock with PVC or PVC/PUR cleat 05-446



Variant	Material	Shore	Color	Stock	Pack	Prop.	Use	Comments
04-204-2449	PELD		□	↷	1 x 2.500		⊗	
04-204-2448	PVC (PH29)	❖	□	↷	1 x 2.500	✳	⊗ ⊕	
04-204-1332	PVC (PY28)	❖	■	✓	1 x 2.500		⊗ ⊕	

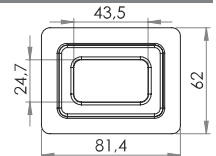
Fits With:



05-446

04-205
Eyelet, rectangular, 24/43mm

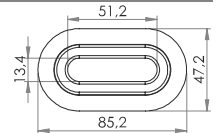

Rectangular PVC eyelet with square shoulders and 24 x 43mm hole. Typically used for hole reinforcements in banners, tarpaulins, building wraps etc.



Variant	Material	Shore	Color	Stock	Pack	Prop.	Use	Comments
04-205-2006	PVC (PZ33)	❖	■	↷	1 x 500	✳	⊗ ⊕	
04-205-2007	PVC (PY47)	❖	■	↷	1 x 500		⊗ ⊕	

04-206
Eyelet, oval, 13/51mm


Oval PVC eyelet with square shoulders for HF welding onto banners, tarpaulins, building wraps etc. 13 x 51mm hole. Forms a lock with cleat 05-646



Variant	Material	Shore	Color	Stock	Pack	Prop.	Use	Comments
04-206-3015	PVC (PY28)	❖	■	↷	1 x 1.200		⊗ ⊕	
04-206-3003	PVC (PZ33)	❖	■	↷	1 x 1.200	✳	⊗ ⊕	
04-206-3005	PVC (PY28)	❖	■	✓	1 x 1.200		⊗ ⊕	
04-206-3011	PVC (PY28)	❖	■	↷	1 x 1.200		⊗ ⊕	
04-206-3021	PVC/PUR	❖	■	↷	1 x 1.200		⊗ ⊕	

Fits With:



05-646



05-046

Properties:

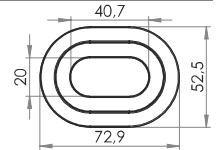
26
Use:


All geometrical dimensions and functional information are indicative. (Unless tolerances are specified). Carmo is not responsible for misprints and technical changes.

Grommets and Eyelets

04-403
Eyelet, oval, 20/40mm

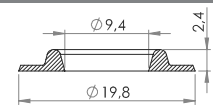

Oval PVC eyelet with square shoulders for HF welding onto banners, tarpaulins, building wraps etc. 20 x 40mm hole. Specially developed for both plastic and metal TIR turn-buckles.



Variant	Material	Shore	Color	Stock	Pack	Prop.	Use	Comments
04-403-1001	PVC (PY28)	❖	■	↷	1 x 2.000		⚡ ⚡ ⚡	

Weldable Eyelets, round, round shoulders
04-121
Eyelet, 3/8" (9,5mm)

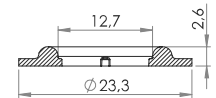

3/8" (9,5 mm) plastic eyelet with round shoulders. Optimised for High Frequency (HF) welding.



Variant	Material	Shore	Color	Stock	Pack	Prop.	Use	Comments
04-121-2001	PVC (PZ33)	❖	□	✓	4 x 10.000	⚡	⚡ ⚡ ⚡	
04-121-2011	PVC (PZ33)	❖	■	↷	4 x 10.000	⚡	⚡ ⚡ ⚡	
04-121-1008	PVC/PUR	❖	□	↷	4 x 10.000		⚡ ⚡ ⚡	

04-122
Eyelet, 1/2"

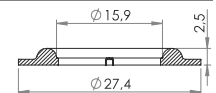

1/2" plastic eyelet with round shoulders. Optimised for High Frequency (HF) welding.



Variant	Material	Shore	Color	Stock	Pack	Prop.	Use	Comments
04-122-3002	PVC (PZ33)	❖	□	✓	4 x 7.000		⚡ ⚡ ⚡	

04-123
Eyelet, 5/8" (15,8mm)

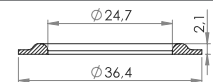

5/8" (15,8mm) plastic eyelet with round shoulders. Optimised for High Frequency (HF) welding.



Variant	Material	Shore	Color	Stock	Pack	Prop.	Use	Comments
04-123-1001	PVC (PZ33)	❖	□	↷	4 x 4.000	⚡	⚡ ⚡ ⚡	

04-125
Eyelet, 1" (25 mm)


1" (25 mm) plastic eyelet with round shoulders. Optimised for High Frequency (HF) welding.



Variant	Material	Shore	Color	Stock	Pack	Prop.	Use	Comments
04-125-1002	PUR		■	↷	4 x 3.000			
04-125-1001	PVC (PZ33)	❖	□	↷	4 x 3.000	⚡	⚡ ⚡ ⚡	

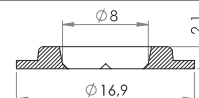
Grommets and Eyelets

Weldable eyelets, round, square shoulders

04-100
Eyelet, 8mm

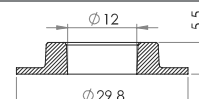

8mm plastic eyelet with square shoulders. Optimised for High Frequency (HF) welding.

Variant	Material	Shore	Color	Stock	Pack	Prop.	Use	Comments
04-100-4083	PVC (PZ33)	❖	□	✓	4 x 15.000	✳	⚡	


04-101
Eyelet, heavy, 11/30mm

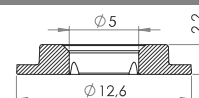

11/30mm PVC eyelet with square shoulders. Heavy duty design for demanding applications. Optimised for High Frequency (HF) welding.

Variant	Material	Shore	Color	Stock	Pack	Prop.	Use	Comments
04-101-1102	PVC (PG47)	❖	□	✓	4 x 2.000		⚡	


04-111
Eyelet, 5mm

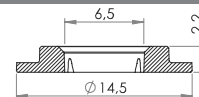

5mm plastic eyelet with square shoulders. Optimised for High Frequency (HF) welding.

Variant	Material	Shore	Color	Stock	Pack	Prop.	Use	Comments
04-111-2002	PVC (PZ33)	❖	□	✓	5 x 20.000	✳	⚡	
04-111-2004	PVC/PUR	❖	□	✓	5 x 20.000		⚡	


04-112
Eyelet, 6,5mm

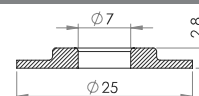

6,5mm plastic eyelet with square shoulders. Typically used as hole reinforcements in banners, tarpaulins, building wraps etc.

Variant	Material	Shore	Color	Stock	Pack	Prop.	Use	Comments
04-112-2001	PVC (PZ33)	❖	□	✓	4 x 20.000	✳	⚡	


04-274
Eyelet, heavy, 7/25mm


7/25mm heavy duty plastic eyelet, with square shoulders. Optimised for HF welding. Typically used for hole reinforcements in banners, tarpaulins, building wraps etc.

Variant	Material	Shore	Color	Stock	Pack	Prop.	Use	Comments
04-274-1002	PVC (PZ33)	❖	□	✓	5 x 5.000	✳	⚡	


Properties:


Cold-resistant



UV-resistant



Oil-resistant



Re-inforced/armed

28

Use:


HF-weldable



Ultrasonic weldable



Glueable



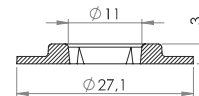
Sterilizable

All geometrical dimensions and functional information are indicative. (Unless tolerances are specified). Carmo is not responsible for misprints and technical changes.

Grommets and Eyelets

04-275
Eyelet, heavy, 11/27mm

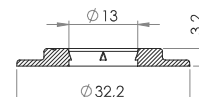

11/27mm heavy duty plastic eyelet with square shoulders. Optimised for HF welding and use in automatic machines



Variant	Material	Shore	Color	Stock	Pack	Prop.	Use	Comments
04-275-1318	PELD		□	✓	4 x 4.000		☑	Bulk
04-275-1322	PVC (PG47)	◆	□	✓	4 x 4.000		☑	Bulk
04-275-1353	PVC (PY28)	◆	□	✓	80 x 175	■	☑	Stacked
04-275-1303	PVC (PY28)	◆	□	✓	4 x 4.000		☑	Bulk
04-275-1354	PVC (PY28)	◆	□	✓	80 x 175	■	☑	Stacked
04-275-1312	PVC (PY28)	◆	□	✓	4 x 4.000		☑	Bulk
04-275-1304	PVC (PY28)	◆	■	✓	4 x 4.000		☑	Bulk
04-275-1356	PVC (PY28)	◆	■	✓	80 x 175	■	☑	Stacked
04-275-1310	PVC (PY28)	◆	■	✓	4 x 4.000		☑	Bulk
04-275-1315	PVC/PUR	◆	□	✓	4 x 4.000		☑	Bulk
04-275-1359	PVC/PUR	◆	□	✓	80 x 175	■	☑	Stacked

04-276
Eyelet, heavy, 13/32mm, Stacked

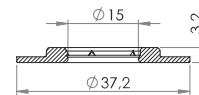

13/32mm heavy duty plastic eyelet with square shoulders. Optimised for HF welding and use in automatic machines.



Variant	Material	Shore	Color	Stock	Pack	Prop.	Use	Comments
04-276-2051	PVC (PZ33)	◆	□	✓	46 x 174	■	☑	☑
04-276-2001	PVC (PH29)	◆	□	✓	46 x 174	■	☑	☑

04-277
Eyelet, heavy, 15/37mm, Stacked


15/37mm heavy duty plastic eyelet with square shoulders. Optimised for HF welding and use in automatic machines



Variant	Material	Shore	Color	Stock	Pack	Prop.	Use	Comments
04-277-3201	PELD		□	✓	29 x 168	■	☑	
04-277-3106	PVC (PZ33)	◆	□	✓	29 x 168	■	☑	☑
04-277-3200	PVC (PY29)		□	✓	29 x 168	■	☑	
04-277-3118	PVC (PY28)	◆	□	✓	29 x 168	■	☑	
04-277-1003	PVC (PY28)	◆	■	✓	29 x 168	■	☑	
04-277-1028	PVC/PUR	◆	□	✓	29 x 168	■	☑	

Fits With:



05-200

Properties:


29

Use:

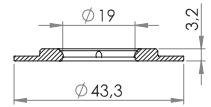

Grommets and Eyelets

04-278

Eyelet, heavy, 19/43mm, Stacked



19/43mm heavy duty plastic eyelet with square shoulders. Optimised for HF welding and use in automatic machines.



Variant	Material	Shore	Color	Stock	Pack	Prop.	Use	Comments
04-278-1026	PELD			✓	32 x 175		☞	
04-278-1003	PVC (PZ33)	⊠	☐	✓	32 x 175	✳	☞	☞
04-278-1012	PVC (PY28)	⊠	☐	✓	32 x 175		☞	☞
04-278-1040	PVC (PY28)	⊠	■	✓	32 x 175		☞	☞
04-278-1055	PVC (PY28)	⊠	■	✓	32 x 175		☞	☞
04-278-1041	PVC (PY28)	⊠	■	✓	32 x 175		☞	☞
04-278-1057	PVC (PY28)	⊠	■	✓	32 x 175		☞	☞
04-278-1010	PVC (PY28)	⊠	■	✓	32 x 175		☞	☞
04-278-1030	PVC (PY28)	⊠	■	✓	32 x 175		☞	☞
04-278-1006	PVC (PY28)	⊠	■	✓	32 x 175		☞	☞
04-278-1008	PVC (PY28)	⊠	■	✓	32 x 175		☞	☞
04-278-1050	PVC/PUR	⊠	■	✓	32 x 175		☞	☞

Fits With:



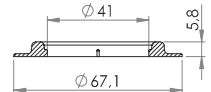
05-200

04-279

Eyelet, 40/67mm, heavy



40/67mm heavy duty plastic eyelet with square shoulders. Optimised for HF welding.



Variant	Material	Shore	Color	Stock	Pack	Prop.	Use	Comments
04-279-1011	PVC (PY28)	⊠	■	✓	1 x 1.500		☞	
04-279-1003	PVC (PY28)	⊠	■	✓	1 x 1.500		☞	

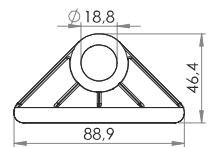
Ready to use eyelet borders and corners

04-105

Triangular attachment eyelet



PVC corner, widely used for attaching guy lines to tents, marquees, tarpaulins. Can be either HF welded or sewn on.



Variant	Material	Shore	Color	Stock	Pack	Prop.	Use	Comments
04-105-2000	PVC (PZ33)	⊠	☐	✓	4 x 1.000	✳	☞	

04-601

Eyelet Border, 85mm x 50m roll



Eyelet border with pre-welded PVC eyelets - Simply align, overlap edges and weld or simply sew up! White PVC with natural colour eyelets.



Variant	Material	Shore	Color	Stock	Pack	Prop.	Use	Comments
04-601-7277				✓	1 x 50m	✳		

Properties:  Cold-resistant  UV-resistant  Oil-resistant  Re-inforced/armed **30** Use:  HF-weldable  Ultrasonic weldable  Glueable  Sterilizable

All geometrical dimensions and functional information are indicative. (Unless tolerances are specified). Carmo is not responsible for misprints and technical changes.